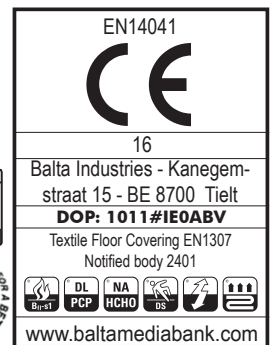
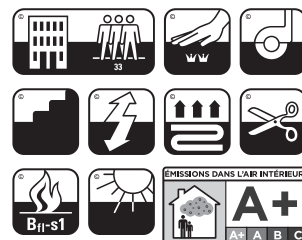
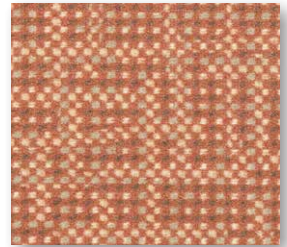


CONSTRUCTION STRUCTURE STRUKTUR STRUCTUUR	Tufting 5/64" cut pile Tufté 5/64" velours Getuftet 5/64" Velours Getuft 5/64" velours
PILE MATERIAL COMPOSITION DU VELOURS POLMATERIAL POOLMATERIAAL	100% PA 6 IMPREL®
PRIMARY BACKING SUPPORT TRÄGERMATERIAL TUFTDOEK	Non woven PES Non tissé Vlies Felt
SECONDARY BACKING DOSSIER RÜCKEN TAPIJTRUG	Action Back
PILE WEIGHT POIDS DU VELOURS POLEINSATZGEWICHT POOLGEWICHT	Ca. 630 gr/m ²
TOTAL WEIGHT POIDS TOTAL GESAMTGEWICHT TOTAAL GEWICHT	Ca. 1.576 gr/m ²
PILE HEIGHT EPAISSEUR DU VELOURS POLHÖHE POOLHOOGTE	Ca. 4,2 mm
TOTAL HEIGHT EPAISSEUR TOTAL GESAMTHÖHE TOTALE DIKTE	Ca. 6,4 mm
TUFT DENSITY NOMBRES DE POINTS NOPPENZAHL AANTAL PUNTEN	Ca. 294 000/m ²
PILE DENSITY DENSITÉ DU VELOURS POLROHDICHTE POOLDICHTHEID	Ca. 0.098 g/cm ³
CLASSIFICATION CLASSEMENT KLASSIFIKATION CLASSIFICATIE	EN 1307 33 - LC2

CASTOR CHAIR SUITABILITY CHAISE À ROULETTES STUHLROLLENEIGNUNG ROLSTOELGESCHIKTHEID	EN 985 A: intensive use
STAIR SUITABILITY ESCALIERS TREPPENEIGNUNG TRAPPENGESCHIKTHEID	EN 1963 A: intensive use

PERMANENTLY ANTISTATIC ANTISTATIC PERMANENT PERMANENT ANTISTATISCH PERMANENT ANTISTATISCH	ISO 6356 ≤ 2 kV
IMPACT NOISE RATING ISOLATION PHONIQUE TRITTSCHALLVERBESSERUNG GELUIDSISOLATIE	ISO 140-8 22 dB ΔLw
SOUND ABSORPTION ABSORPTION PHONIQUE SCHALLABSORPTIONSGRAD GELUIDSABSORPTIE	ISO 354 0.20 αw
THERMAL RESISTANCE RÉSISTANCE THERMIQUE WÄRMEDURCHLASSWIDERSTAND WARMEDOORLAATWEERSTAND	ISO 8302 0.09m ² K/W
FASTNESS TO LIGHT SOLIDITÉ A LA LUMIÈRE LICHTECHTHEID LICHTECHTHEID	ISO 105-B02 ≥ 5-6
COLOUR FASTNESS TO WATER SOLIDITÉ À L'EAU WASSERECHTHEID WATERECHTHEID	EN ISO 105-E01 ≥ 4-5
FIRE RESISTANCE COMPORTEMENT AU FEU BRENNVERHALTEN BRANDGEDRAG	EN 13501-1 Bfl-s1 if glued
RUBBING FASTNESS SOLIDITÉ AU FROTTEMENT REIBECHTHEID WRIJFECHTHEID	EN ISO 105-X12 ≥ 4
WIDTH LARGEUR BREITE BREEDTE	EN ISO 3018 ca. 400 cm

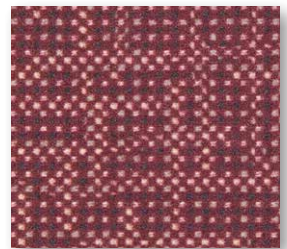




▲ 65



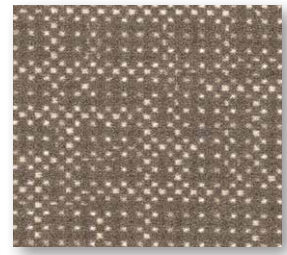
▲ 10



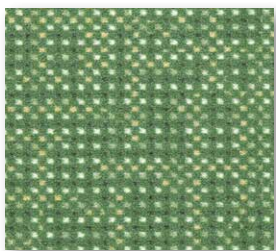
▲ 17



▲ 98



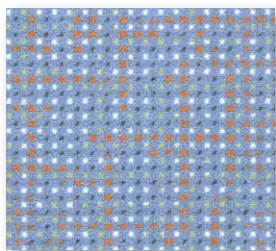
▲ 49



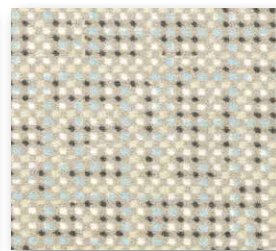
▲ 23



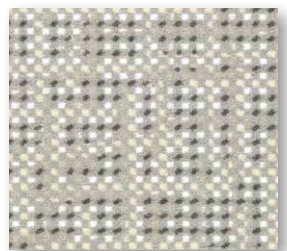
▲ 77



▲ 75



▲ 43



▲ 95