



# Sheer Illusions

COLLECTION



# Obscura

## Index

1/ Form & function at their purest	p.5
2/ Unifying aesthetics & utility	p.7
3/ Obscura	p.9
4/ Lumen	p.11
5/ Sheer ILLusions - the shades	p.13
6/ Pioneering technology	p.15
Technical specifications	p.20

# æ Sheer ILLusions

COLLECTION

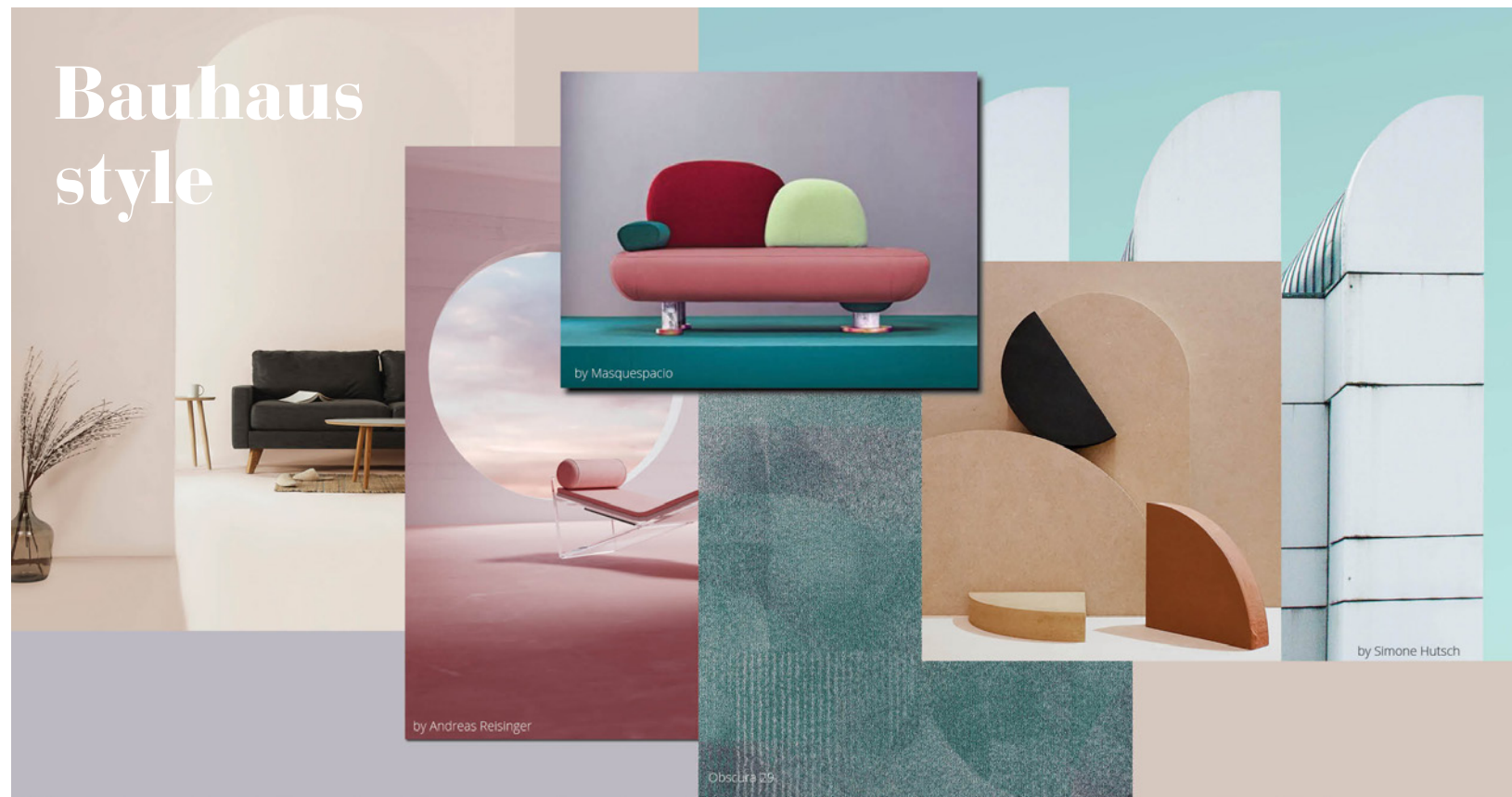
Form & function at their purest.

Characterised by a distilled, harmonious approach, Sheer ILLusions highlights the very **essence of both form and function**, offering **spectacular atmospheric design** to your project.

This range features 2 refined loop pile carpets with a modern, industrial sheen. **Obscuras** geometric shapes are inspired by on-trend Bauhaus style . **Lumen**, on the other hand, echoes the influences of layered design in visual arts.

Sheer ILLusions impressive looks are realized with high-definition **digital printing technology**, allowing to create **unique patterns** and to add **visual depth** by layered printing. The collection is made from 100% polyamide 6 Imprel® yarn for superior performance and easy maintenance.





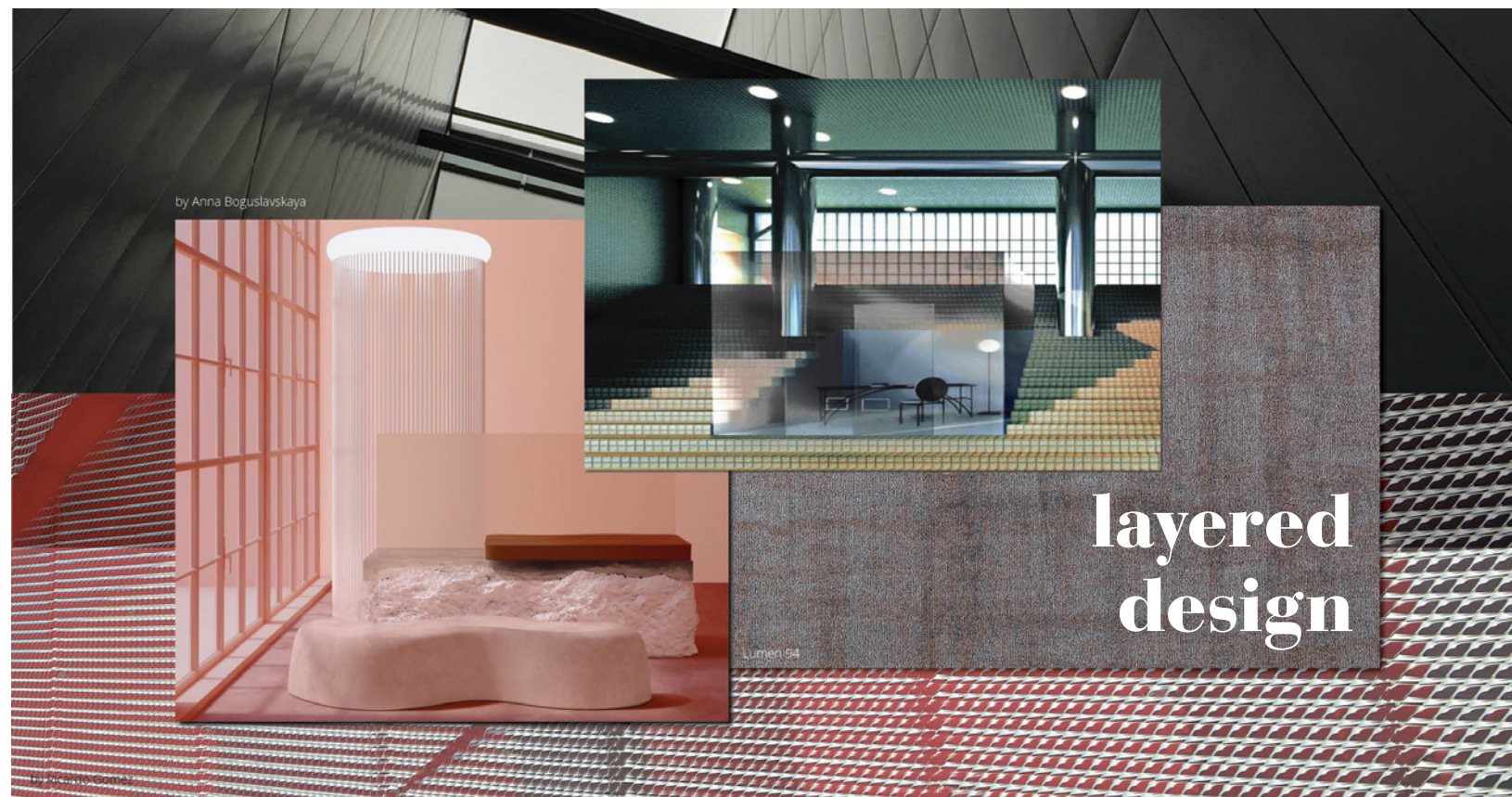
1/

## Form & function at their purest

Faced with the choice between aesthetics and utility, our designers said: “why choose between them?”

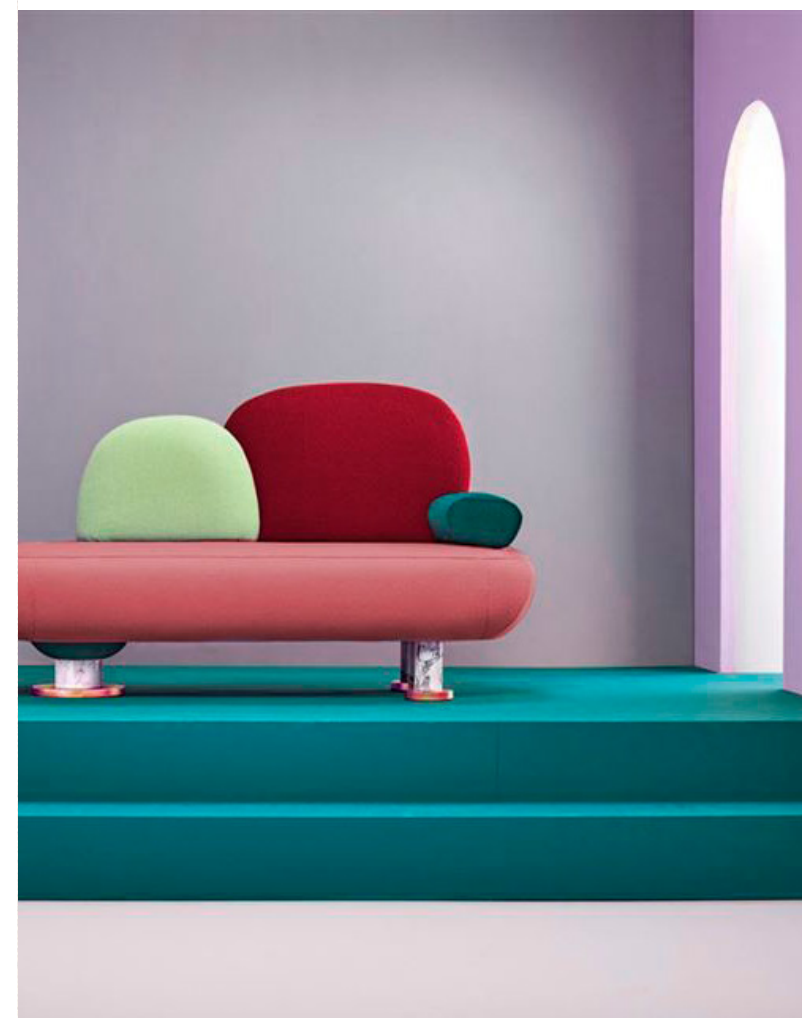
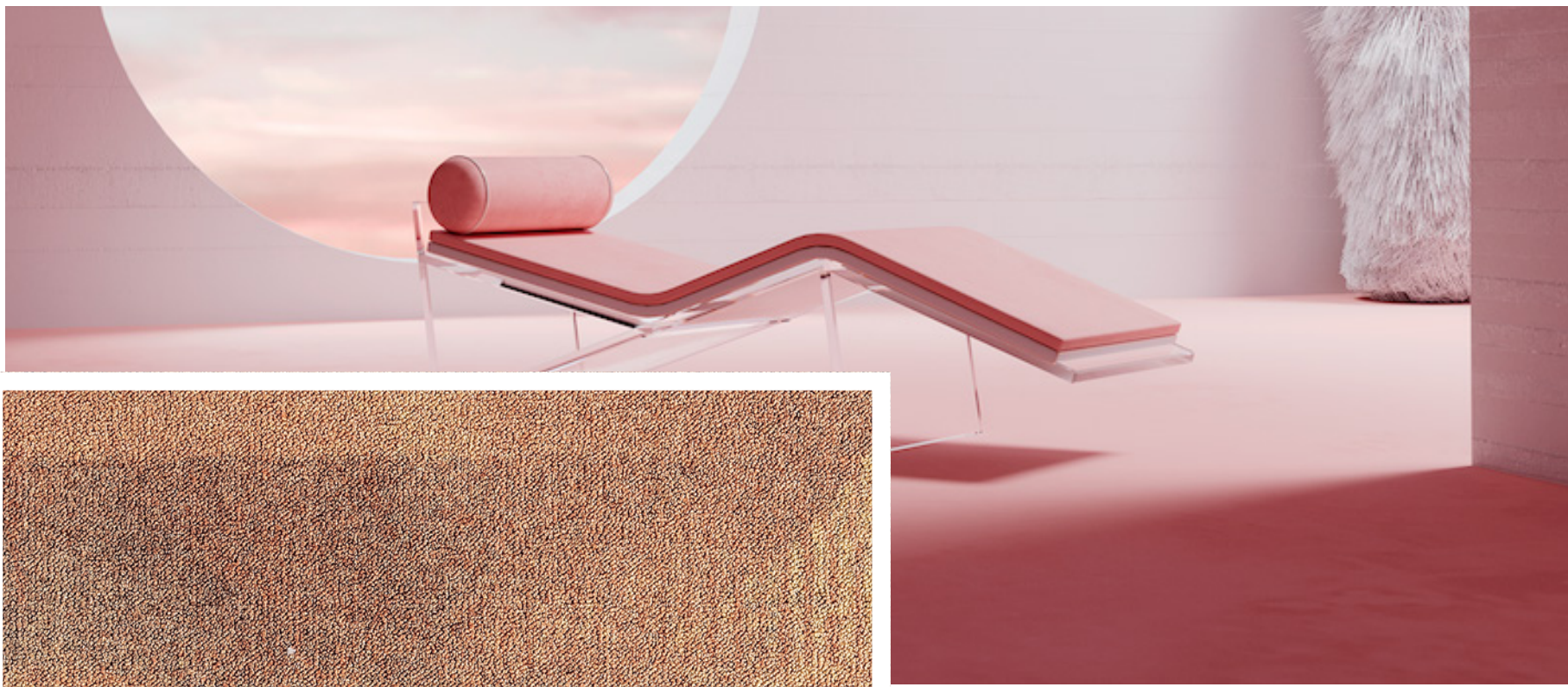
Line, shape, colour – these are the fundamental elements of design. Everything else is just unnecessary noise. Our product developers believe that, instead of being opposing forces, form and function go hand in hand. They elevate each other.

Sheer ILLusions provides the very essence of both form and function, giving textile comfort and offering stunning design through inspired imagery, artistic license, on-point hues and unbeatable performance.



layered  
design





## 2/ **unifying aesthetics & utility**

Consider Bauhaus. This stripped-down art house style offers a refreshing return to basic elements: geometric figures, clean shapes, minimalistic motifs. The result? Unquestioned timelessness. Now, think of the layered design technique: an intuitive process of adding balanced facets in layers to a design to achieve extraordinary depth.

Obscura relies on the play of light and shadow over minimalistic lines and geometric Bauhausian shapes to generate warm comfort zones.

Lumen combines tangential layers of texture, colour, highlights, and shades, for a painting-like effect that tells a cohesive visual story on multiple levels.





# 3/ **Obscura**

The floor is one of the largest surfaces in any room. As a result, your choice in flooring has a powerful impact on sensory experience, the perception of space – and the success of your entire project.

Select Obscura in warm earth tones to offer refuge in the beauty of nature, infusing the space with personality, elegance and comfort. Complement this atmosphere with raw concrete walls and ceilings and minimalistic décor. White lighting brings out the depth and reflectivity of the flooring, and the addition of black-framed glass separators will amplify the effect.





## Lumen

Transform your flooring zone into an expressive, artistic space. Choose Lumen in deep red-brown and pale blue – tipping a hat to high fashion.

Create a world of duality: chic and cosy, grounded and luxurious, thought-provoking and soothing. Add an accent colour, such as chairs in fresh, marine blue, for a focal point complemented by modern text art. There's no need for purposeless embellishments in this space – keep it minimal and industrial with concrete walls and neon ceiling lighting. Glass separators in black frames divide the space into zones while maximising the play of light.



# 5/ **Sheer ILLusions - the shades**

## **a touch of blue meets modern brown**

Design with beautiful shade combinations of pale blue and contemporary brown to balance your interior and create a refuge in today's busy places.

The touch of grey-blue caters for an airy breeze whereas earthy brown plays with natural light and adds a welcoming, cozy feel. Both colours elevate each other, just blending in without taking front stage in decoration.







Lumen 46

Obscura 64

by Jean-Philippe Delberghe

by Joseph

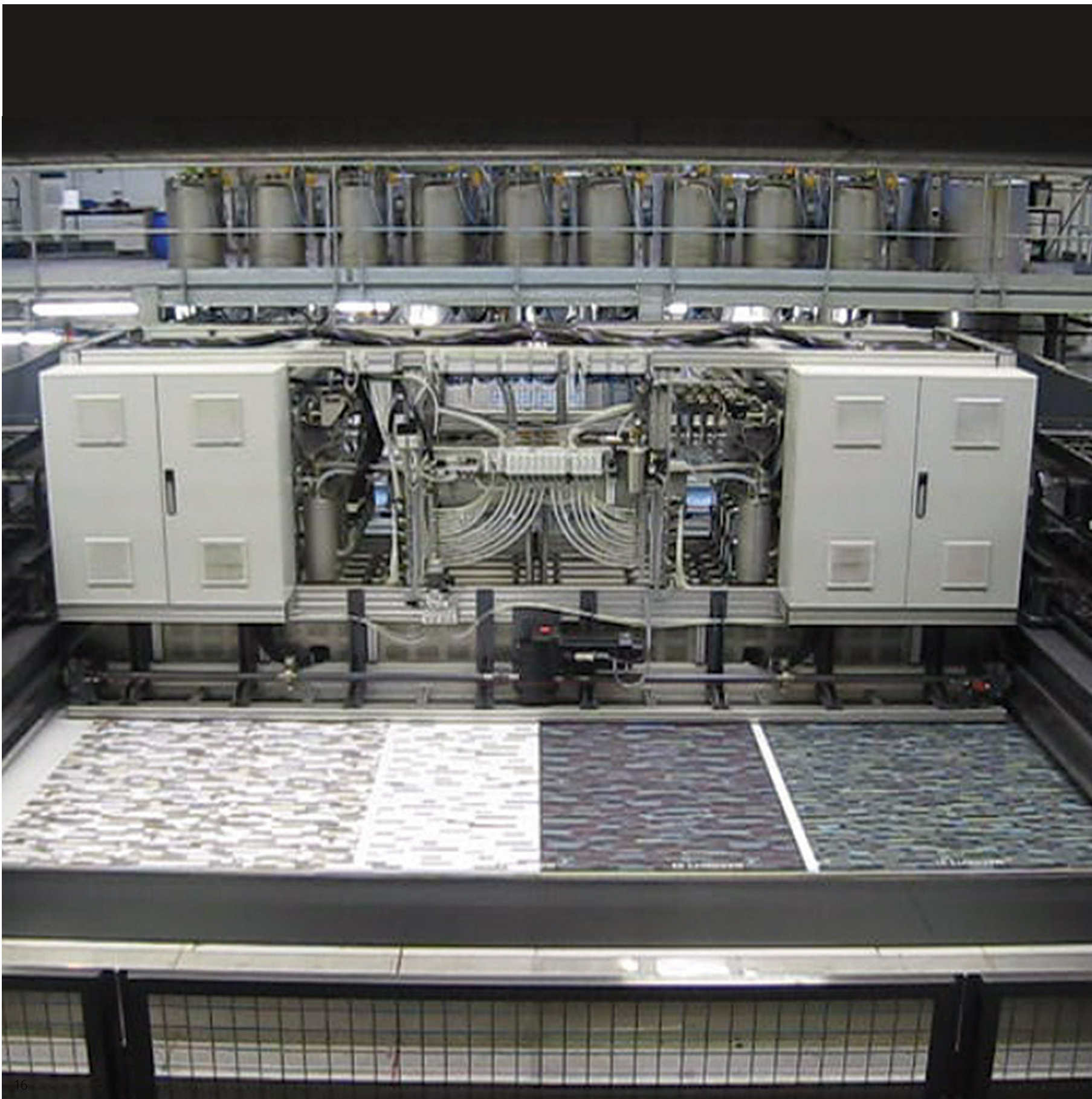
### warming terra & brown

Several warm colours complement each other and provide extra comfort in a harmonized atmosphere.

Design with on-trend earthen shades and enjoy the delightful warmth they are creating.

Brown sets the foundation of harmony and balance. A touch of terracotta enlightens the setting and helps to create focal points. When used together, these hues decorate in style, enforce the feeling of comfort and make us dream of nature, the desert, the colour of African ground...





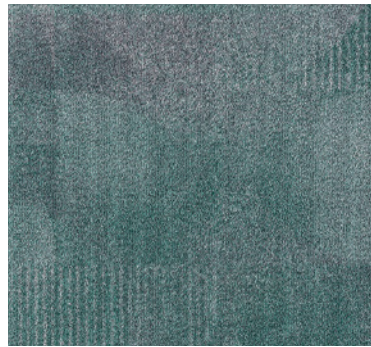
## 6/ **Pioneering technology breathes life into design**

To create Sheer ILLusions flooring designs, we apply the Chromojet digital printing system. This technology relies on computer-controlled high-speed valves to inject pre-mixed, pressurised colour into the face of the pile with high precision. The machine never touches the fabric. As a result, every design offers the deepest possible colour penetration and excellent print definition.

Both Obscura and Lumen are made of 100% polyamide 6 Imprel® yarn. It offers superior technical performance, easy maintenance and high wear resistance.



# Obscura | COLOURS



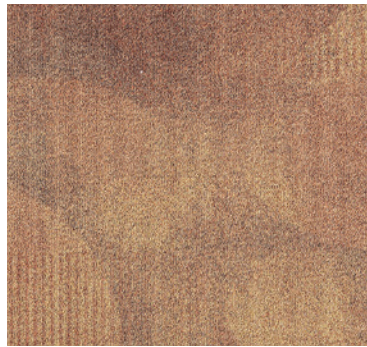
Obscura 29



Obscura 79



Obscura 49



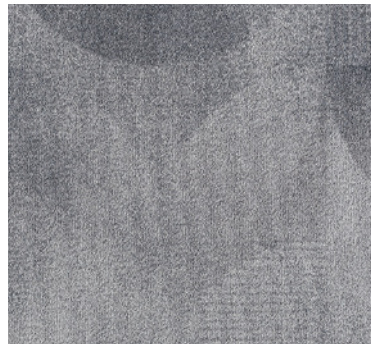
Obscura 64



Obscura 39



Obscura 93



Obscura 96

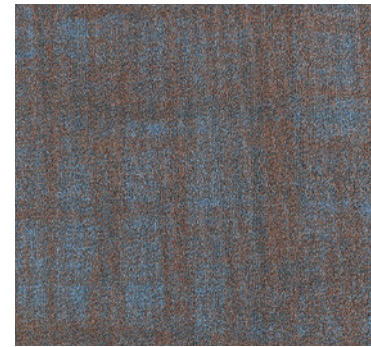
# Lumen | COLOURS



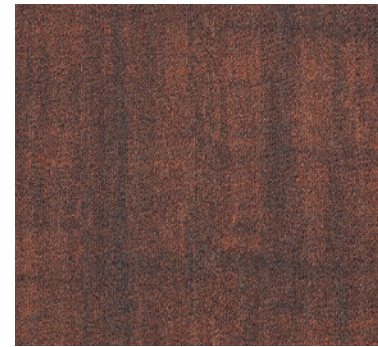
Lumen 93



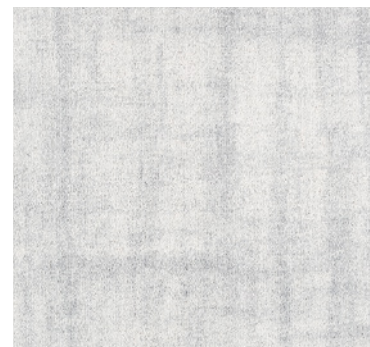
Lumen 79



Lumen 49



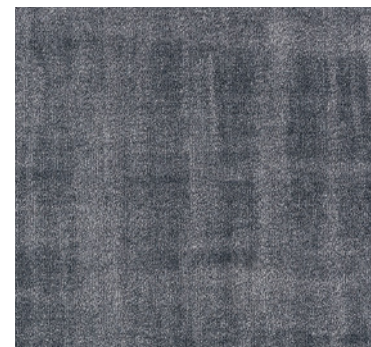
Lumen 46



Lumen 39



Lumen 94



Lumen 96



# Obscura & Lumen | TECHNICAL SPECIFICATIONS

Both Obscura and Lumen are printed on high performance cloth 'Sirocco'.

<b>CONSTRUCTION</b> Tufting 1/10" loop pile	<b>PERMANENTLY ANTISTATIC</b> ISO 6356 < 2 kV
<b>PILE MATERIAL</b> 100% PA 6 IMPREL®	<b>IMPACT NOISE RATING</b> ISO 140-8 25 dB ΔLw
<b>PRIMARY BACKING</b> Non woven PES	<b>SOUND ABSORPTION</b> ISO 354 0.15 aw
<b>SECONDARY BACKING</b> ActionBack	<b>THERMAL RESISTANCE</b> ISO 8302 0.07 m² K/W
<b>PILE WEIGHT</b> Ca. 700 gr/m²	<b>FASTNESS TO LIGHT</b> ISO 105-B02 ≥ 5-6
<b>TOTAL WEIGHT</b> Ca. 2.050 gr/m²	<b>COLOUR FASTNESS TO WATER</b> EN ISO 105-E01 ≥ 4-5
<b>PILE HEIGHT</b> Ca. 3,4 mm	<b>RUBBING FASTNESS</b> EN ISO 105-X12 ≥ 4
<b>TOTAL HEIGHT</b> Ca. 6,1 mm	<b>FIRE RESISTANCE</b> EN 13501-1 Cfl-s1
<b>TUFT DENSITY</b> Ca. 240 000/m²	<b>NUMBER OF COLOURS</b> 14
<b>PILE DENSITY</b> Ca. 0.143 g/cm³	<b>WIDTH</b> EN ISO 3018 ca. 400 cm
<b>CLASSIFICATION</b> EN 1307 33 - LC2	
<b>CASTOR CHAIR SUITABILITY</b> EN 985 A: intensive use	
<b>STAIR SUITABILITY</b> EN 1963 A: intensive use	



Is Sheer ILLusions your mesmerizing design choice?  
Let's talk!

INFO@ARCEDITION.COM

Balta Industries nv  
Kanegemstraat 15 - B-8700 Tielt - Belgium - T +32 (0)51 42 44 11  
info@arcedition.com - www.arcedition.com



