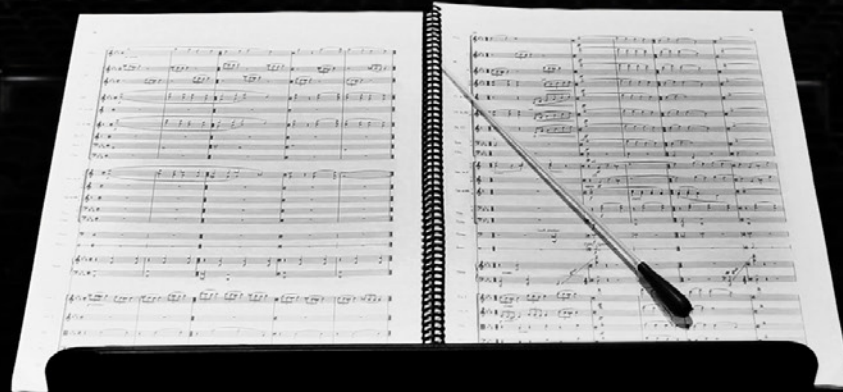


THE
**Suite
Symphony**
COLLECTION



Index	
1/ The rich harmonies...	p.5
2/ Power & romance from the floor up	p.7
3/ Bach	p.9
4/ Mozart	p.11
5/ Suite Symphony - the shades	p.13
6/ Technical excellence	p.17
Suite Symphony Service collection (Bach, Debussy, Mozart, Strauss)	p.17
technical specifications	p.32
Suite Symphony special designs (Cambini, Sati, Schubert, Mendelssohn, Nelson)	p.33



THE
Suite Symphony
COLLECTION

Experience the rich harmonies of Suite Symphony

Suite Symphony **comfort floorings reinterpret traditional patterns** based on the grandeur of European decoration history. All named after famous composers, together forming a great flooring symphony with different, yet harmonious tunes.

Using **digital printing technology** to create impressive, high-definition pattern designs, these performance carpets are certainly drawing the eye. Made from our own yarn, 100% polyamide Imprel®, Suite Symphony offers sophisticated flooring solutions with **best wear&tear, excellent acoustical features and superior comfort.**

Empire



Baroque



1/

The rich harmonies of Suite Symphony flooring

With Suite Symphony, we strive to recreate the elegance and luxury of historic European grandeur.

For the signature products in this collection, 'Bach' and 'Mozart', our designers drew influence from two periods where **delicacy and decoration** were at the forefront. The **rich Empire style** with its iconic fleur-de-lis motif representing a timeless symbol of power and success as well as the **playful Baroque ornamentation** lending its signature complexity, embellishment and effortless opulence.



Mozart 234



by Dieter K



by Sven Reac

2/ **Power & romance from the floor up,**

Suite Symphony soft floorings offer **supremely rich texture and sublime patterns** that our designers have carefully reinterpreted based on historically celebrated themes. The characteristics of this flooring collection play a **visual symphony** while tipping a hat to the glorious décor of centuries past.

3/ **Bach**

The dense, compact surface of Bach features a fleur-de-lis pattern that is meant to draw the eye & powerfully define the essential character of your space.

Opt for cardinal red and regal gold Bach carpet in a French lily pattern for timeless majesty. Build harmony with elegant accents such as soaring chandeliers, a period-inspired mirror, unique lighting and a traditional open fireplace. Three levels of ceiling ornamentation create greater depth. Walls in beige ensure a calm background while bringing striking accents to the foreground.

4/ Mozart

Mozart presents an elaborate, floral ornamented pattern – for romance, lavish appeal and a delicate sense of playfulness.

Add dimension and set a romantic ambiance with Mozart's baroque swirl pattern. A sophisticated atmosphere wraps the visitor as soon as they set foot in this luxuriously floored entry hall. Invite guests to join the chorus with seating options and tasteful plants. Flooring in dark grey tone with a tone-in-tone pattern extends the impact of the impressively decorated ceiling and walls with marble features.

5/

Suite Symphony - the shades

daring cardinal red

With luxury and elegance in mind, cardinal red celebrates new traditions and great historic decoration. Its powerful abundance inspires us to be more thoughtful, resourceful, and ingeniously playful with our approach to transform projects into comfort zones. Combine cardinal red with gold accents to power up your floor or add bordeaux colour to bring on feelings of comfort and delight.

by Laura Vinck



by Balenciaga



Bach 10



by Kilyan Sockalingum



by Nicola Nuttall



Mozart 16



by Albert Vincent



by Pedro del Hierro

go calm with classical grey

Contemporary, neutral shades and tone-in-tone patterns offer a new tranquility as we find the softness that alludes from familiar, historic design. The harmonious tones of Suite Symphony honor the wisdom of timeless, aging hues. Colours that inspire us to take a breath, and filter in the calm found amongst our environment's most fundamental tones.

6/ **design backed by excellence in technology**

We use our cutting-edge Chromojet digital printing system to create the impressive, powerful and charming patterns featured in Suite Symphony. During the printing process, the machine never touches the fabric. As a result, every design offers the deepest possible colour penetration and excellent print definition.

Suite Symphony is composed of 100% high-quality polyamide 6 Imprel® yarn, manufactured by our own vertically integrated production. Enjoy superior performance and high abrasion resistance.



THE
Suite Symphony
COLLECTION

products from stock

PM Strauss AB

PM Bach AB

PM Debussy AB

PM Mozart AB



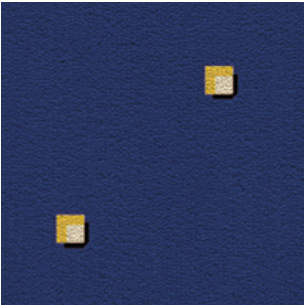
Johann Baptist Strauss
Geb. 25 Oktober 1825 in Wien, gest. 3 Juni 1899 in Wien.

Strauss



Music is known to boost our focus and concentration. Strauss' square motif is the perfect background piece for your office or meeting room. Ready to call the tune?

STRAUSS 77





Johann Sebastian Bach,
Geb. 21 März 1685 in Eisenach, gest. 28 Juli 1750 in Leipzig.

Bach



Set the foundation for a majestic setting with this regal pattern. An elegant statement choice that adds impact to any room. Introduce the grandeur of the largest orchestra hall into your chambers.

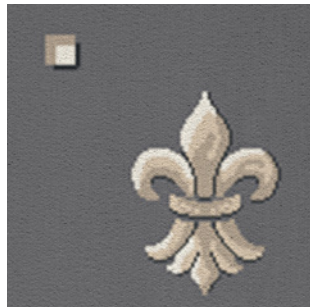
BACH 10



Bach



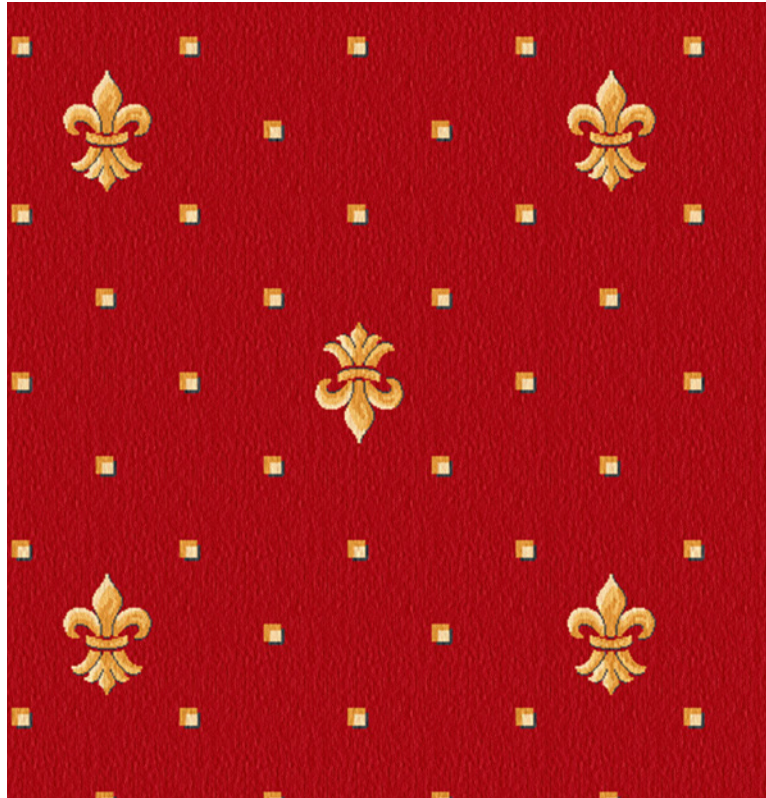
195



77



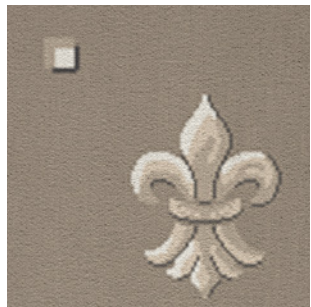
10



23



39

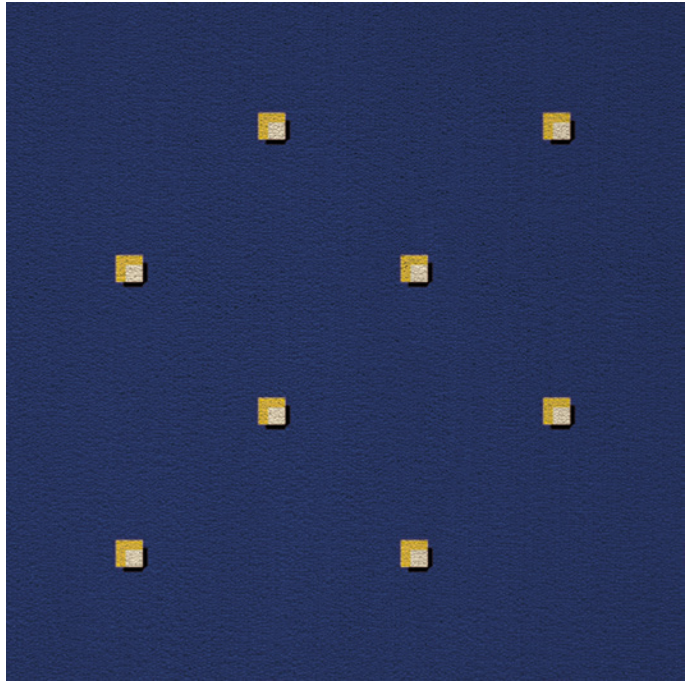


ACTION BACK 400 CM
100% PA 6 IMPREL®
↔ 12 X ↑ 12 CM

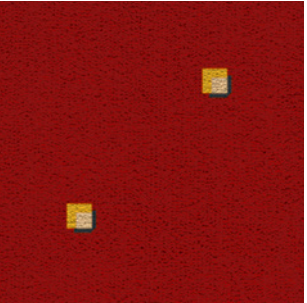
Strauss



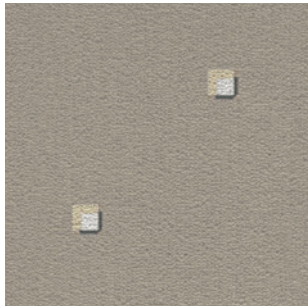
77



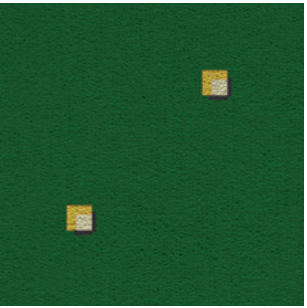
10



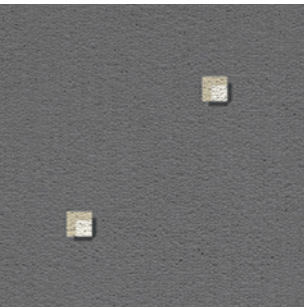
39



23



195



ACTION BACK 400 CM
100% PA 6 IMPREL®
↔ 32 X ↑ 32 CM



Claude Debussy.
Geb. 22 August 1862 in Saint-Germain-en-Laye, gest. 25 März 1918 in Paris.

Débussey



As refined as his Claire de Lune, Débussey's fine dot pattern is a modest yet effective choice. Setting a harmonious mood with this classic motif happens naturally, in a way that is almost poetic.

DEBUSSY 297





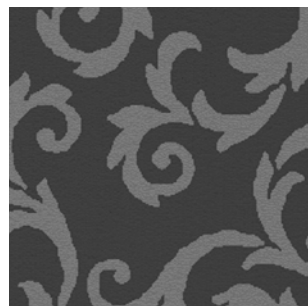
Wolfgang Amade Mozart.
Geb. 27 Jan. 1756 in Salzburg, gest. 5 Dez. 1791 in Wien.

Mozart



Just like a mirror, Mozart's baroque swirl pattern adds dimension to any room. Create space to move and dance in a timeless and sophisticated atmosphere.

MOZART 297



Mozart



197



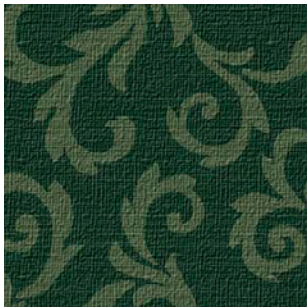
16



234



26



79



297

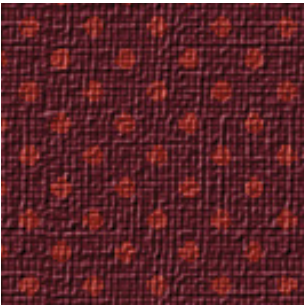


ACTION BACK 400 CM
100% PA 6 IMPREL®
↔ 94 X ↑ 94 CM

Débussey



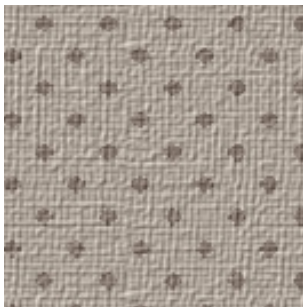
016



026



234



297



079



ACTION BACK 400 CM
100% PA 6 IMPREL®
↔ 2,3 X ↑, 2,3 CM

TECHNICAL SPECIFICATION

CONSTRUCTION Tufting 1/10" saxony	PERMANENTLY ANTISTATIC ISO 6356 < 2 kV
PILE MATERIAL 100% PA 6 IMPREL®	IMPACT NOISE RATING ISO 140-8 24 dB ΔLw
PRIMARY BACKING Non woven PES	SOUND ABSORPTION ISO 354 0,20 αw
SECONDARY BACKING Action Back	THERMAL RESISTANCE ISO 8302 0,15 m² K/W
PILE WEIGHT Ca. 900 gr/m²	FASTNESS TO LIGHT ISO 105-B02 ≥ 5-6
TOTAL WEIGHT Ca. 1.875 gr/m²	COLOUR FASTNESS TO WATER EN ISO 105-E01 ≥ 4-5
PILE HEIGHT Ca. 4 mm	RUBBING FASTNESS EN ISO 105-X12 ≥ 4
TOTAL HEIGHT Ca. 7 mm	FIRE RESISTANCE EN 13501-1 Cfl-s1
TUFT DENSITY Ca. 170.000/m²	WIDTH EN ISO 3018 Ca. 400 cm
PILE DENSITY Ca. 0,143 g/cm³	
CLASSIFICATION EN 1307 32 - LC2	
CASTOR CHAIR SUITABILITY EN 985 A: intensive use	

STAIR SUITABILITY
EN 1963
A: intensive use

10/2020 WE RESERVE ALL RIGHTS FOR TECHNICAL IMPROVEMENTS.

OPTIONS

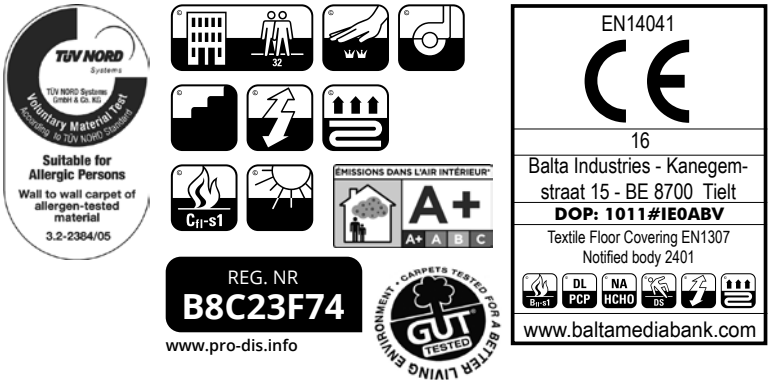
CUSTOMIZED COLOURS
Choose out of standard banks or submit own individual colours.

5 M WIDTH

FIRE CLASS Bfl-s1

BACKING OPTIONS: ULTRATEX / POWERBACK
Ultratex or Powerback with fire class Cfl-s1 might be of interest for:
- a better sound absorption
- a higher impact sound insulation

UPGRADE TO 1,150 GR/M² (PROGRESSA)
Might be of interest for hallways, corridors, public rooms, etc.
Main features :
- 1/10", 2-ply heat set saxony
- performance class 33
- suitable for stairs and castor chairs
- fire resistance Cfl-s1 EN 13501-1
- high impact sound insulation of 26 dB
- min. 60 lm



THE
Suite Symphony
COLLECTION SPECIAL PRODUCTION

choice between several carpet cloths & backings
[click to see more information in our Choose to Create section on the arc edition website](#)

Cambini
Sati
Mendelssohn
Nelson
Schubert



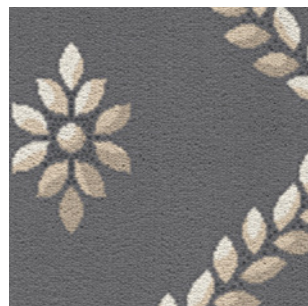
Giuseppe Maria Gioacchino Cambini.
Geb. 13 Februar 1746 in Livorno, gest. 29 Dezember 1825 in Paris.

Cambini



Patterns are essential to any composition.
In music and design. The right combination will
set the tone for a mesmerising melody.
Ready to style? Compose away
with Cambini's diamond pattern.

CAMBINI 95





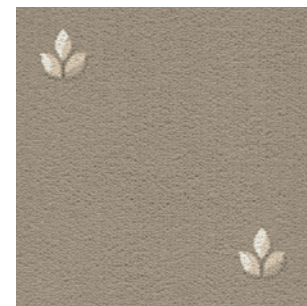
Erik Satie.
Geb. 17 Mai 1866 in Honfleur, gest. 1 Juli 1925 in Paris.

Satie



Originally, chamber music was music composed for the home. The key to creating a warm space is to add tones with a familiar ring to them. Feel like home, away from home, with Satie's welcoming design.

SATIE 39



Cambini



47



39



49



95



77



10



23



Special production:
minimum order
quantity of 240 m²

ACTION BACK 400 CM
100% PA 6 IMPREL®
↔ 24 X ↑ 24 CM

Satie



39



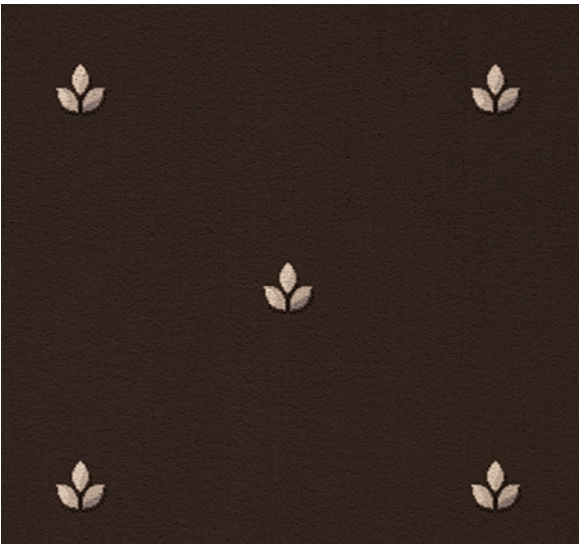
47



95



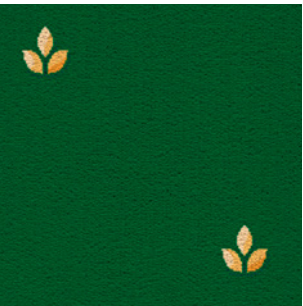
49



77



23



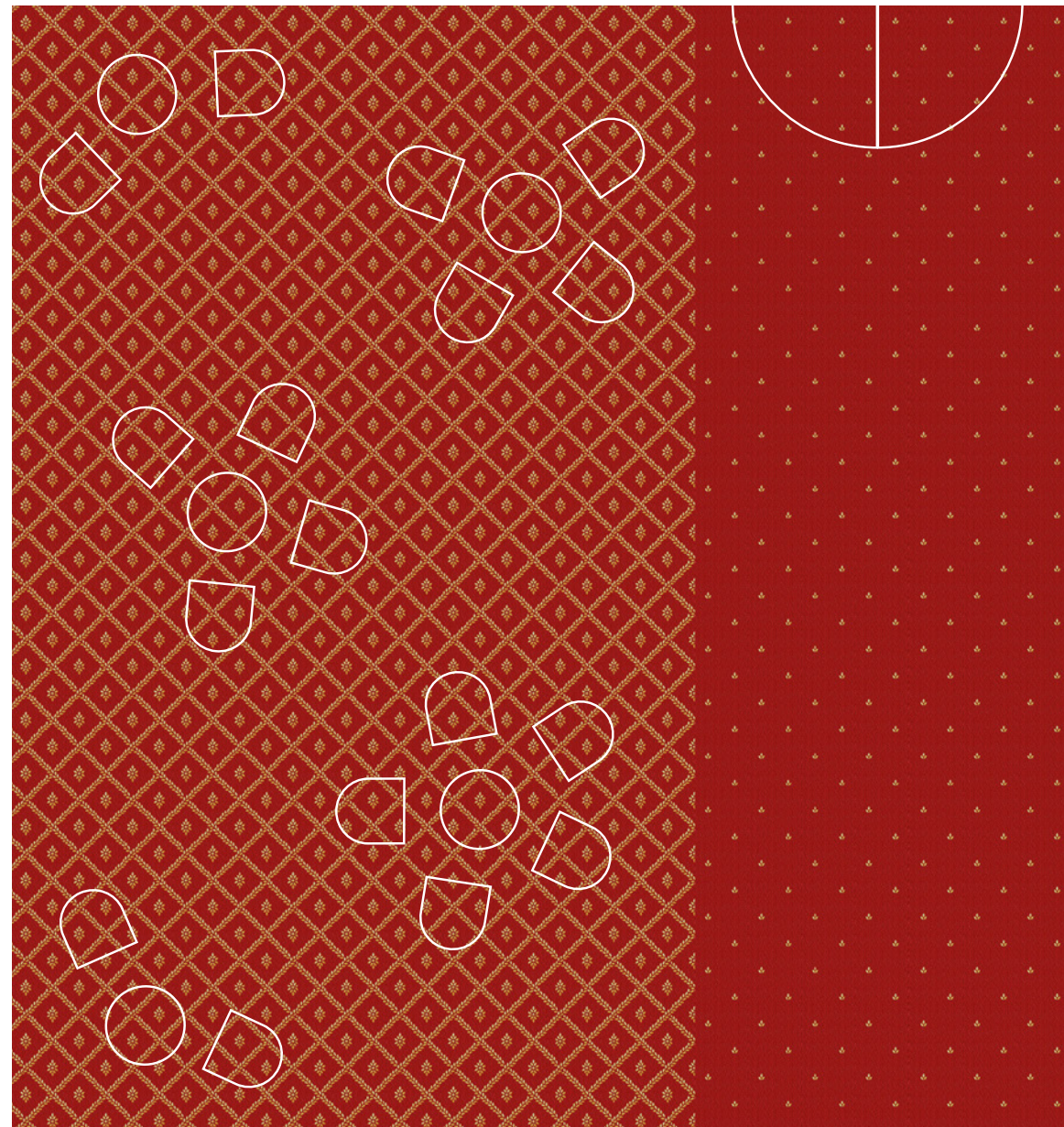
10



Special production:
minimum order
quantity of 240 m²

ACTION BACK 400 CM
100% PA 6 IMPREL®
↔ 24 X ↑ 24 CM

COMBINE SATIE & CAMBINI





Felix Mendelssohn - Bartholdy.
Geb. 3 Febr. 1809 in Hamburg, gest. 4 Nov. 1847 in Leipzig.

Mendelssohn



Not sure if your arrangement hits the right tone?
Climb the style ladder with this decorative
pattern. Mendelssohn creates a carpet of sound
in any setting. Pitch perfect.

MENDELSSOHN 10





Ronald Jack A. Nelson.
Geb. 14 Dezember 1929 in Joliet, Illinois.

Nelson



Interior design, like music, invites you to express yourself. Nelson's three-tone pattern creates a playful ambiance that invites creativity and inspiration. Sit back, relax, enjoy.

NELSON 47



Mendelssohn



10



73



23



77



Special production:
minimum order
quantity of 240 m²

43



95



ACTION BACK 400 CM
100% PA 6 IMPREL®
↔ 99 X ↑ 93 CM

Nelson



49



23



10



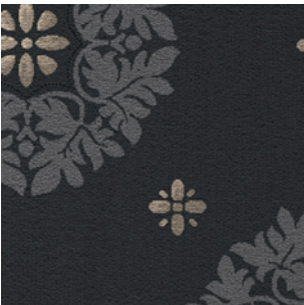
77



95



97



47



Special production:
minimum order
quantity of 240 m²

ACTION BACK 400 CM
100% PA 6 IMPREL®
↔ 50 X ↑ 50 CM



Franz Schubert.
Geb. 31 Jan. 1797 in Wien, gest. daselbst 19 Nov. 1828.

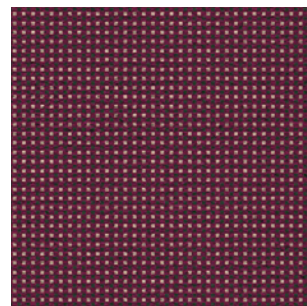
Schubert



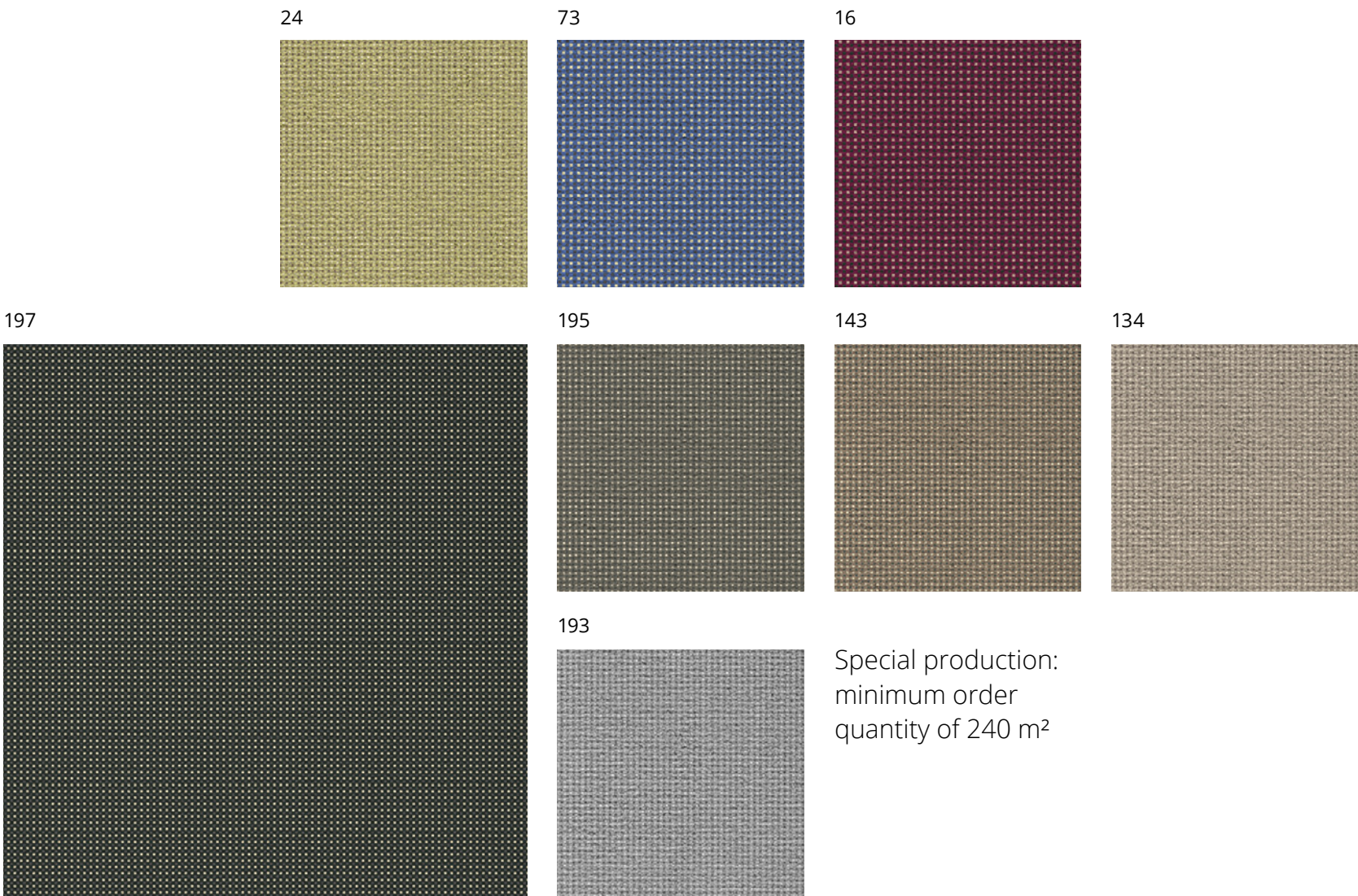
Businessmen in a hotel lounge. Family and friends
in a restaurant. Travelers in an airport hall.

In the urban grid of city life, we brush
by thousands of strangers every day. Music has
the power to unite us all. Appeal to everyone's
taste, with Schubert's geometric pin check pattern.

SCHUBERT 16



Schubert



197

24

73

16

195

143

134

193

Special production:
minimum order
quantity of 240 m²

ACTION BACK 400 CM
100% PA 6 IMPREL®
↔ 1 X ↑ 1 CM

Why choose a Suite Symphony flooring?



The Suite Symphony collection consists of carefully selected designs spread over different patterns, printed on high-performing Promenade cloth.

The collection is entirely produced in-house – from design to finished carpet – using latest digital printing technology and best quality control during every stage of the process.

Can't wait to order? We have 4 designs on stock in 4 m (roll & cut-length).

Committed to quality

- POLYAMIDE 6 IMPREL®**
All products of this collection are made from 100% high-quality polyamide 6 IMPREL® fibres for best performance and resilience.

PRODIS, GUT & TÜV
Quality-controlled production.

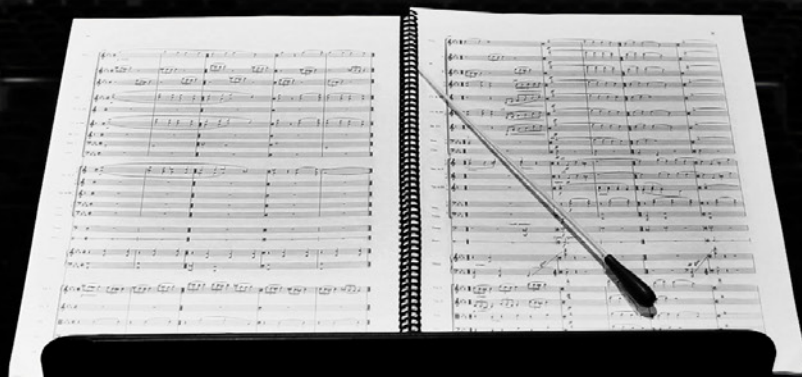
PROFESSIONAL USAGE CLASS
Contract usage class 32, suitable for hotels, offices, restaurants, etc.
- SUITABLE FOR ALLERGICS**
All products are certified as 'suitable for allergics' by the TUV Institute.

FIRE-RESISTANT
All products offer fire resistance Cfl-s1 in accordance with EN 13501-1.

BETTER INDOOR ACOUSTICS
High sound insulation and best sound absorption.

Easy to order,
on-time delivery,
competitive price.

www.arcedition.com



ITC CO BV
Kanegemstraat 15 - B-8700 Tielt - Belgium
T +32 (0)51 42 44 11
info@arcedition.com

 arc edition