

A photograph of a narrow, moss-covered canyon. The walls are dark green and heavily textured with moss. A river flows through the center of the canyon, reflecting the surrounding greenery. The lighting is soft and natural, highlighting the textures of the moss and the water.

æ

# *e-ssential*

THE ELEMENTARY COLLECTION





# α *e-ssential*

THE ELEMENTARY COLLECTION

The one place that we find everything essential to our existence, is **nature**.

An oasis of inspiration and comfort, *e-ssential* introduces **five carpet styles** made with **100% PA solution-dyed fibre**. Providing **excellent lightfastness**, *e-ssential* is a durable and **environmentally-friendly choice**, especially in areas exposed to strong sunlight.

What's more; *e-force*, *e-major*, *e-grid*, *e-rock*, *e-weave* and *e-touch* feature impressive stain-resistance and are easy to maintain. **Easy to clean, strong and comfortable**, this carpet collection is an **elementary choice** for commercial spaces.





AN OASIS OF INSPIRATION

## Index

1/ <i>e-force</i>	6
2/ <i>e-major</i>	12
3/ <i>e-grid</i>	18
4/ <i>e-rock</i>	24
5/ <i>e-weave</i>	30
6/ <i>e-touch</i>	36



A photograph of a river flowing through a forested canyon. The water is white and turbulent as it flows over dark, moss-covered rocks. The surrounding forest is dense with green trees and hanging moss. The overall scene is lush and natural.

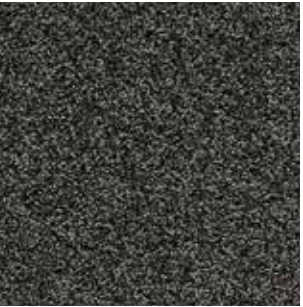
# *e-force*

# 1/ *e-force*

A deep and inviting twist pile carpet in a two-tone effect, *e-force* brings classic style to commercial spaces. With a broad range of colours that resist stains and won't fade in sunlight, *e-force* is a high-performance quality that's perfect for setting a rich and inviting mood in heavy-wear locations. Bring long-lasting luxury with the endurance of *e-force*.



*e-force*



e-force 96



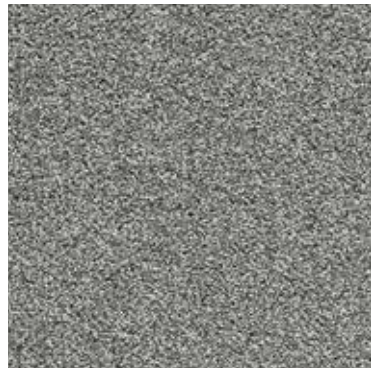
# e-force | COLOURS



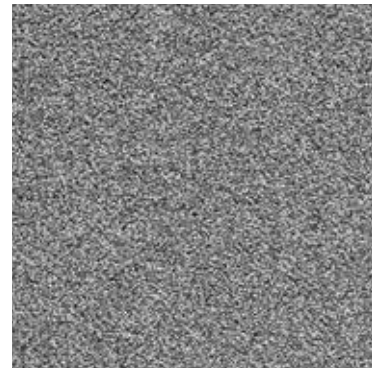
e-force 38



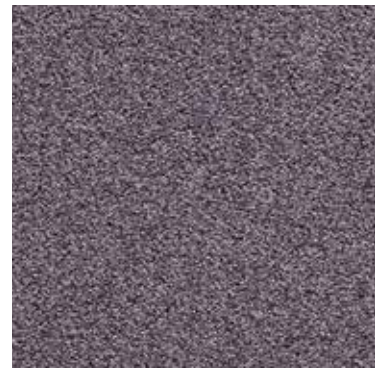
e-force 42



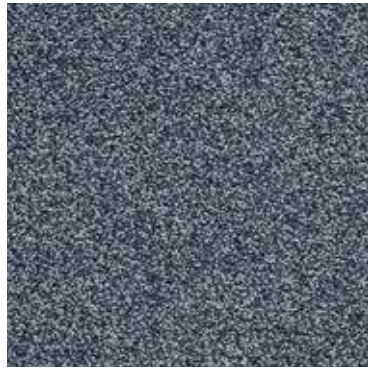
e-force 93



e-force 95



e-force 89



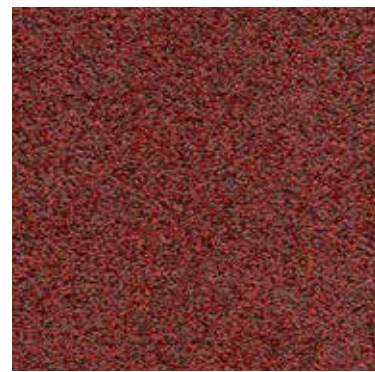
e-force 79



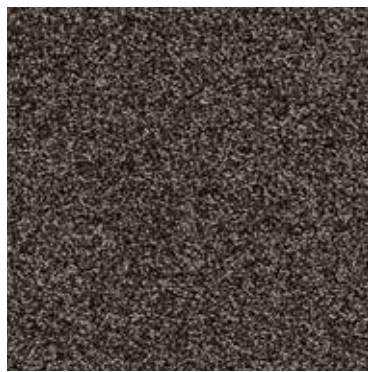
e-force 76



e-force 22



e-force 11



e-force 48



e-force 96



e-force 97

# e-force | TECHNICAL SPECIFICATIONS

## CONSTRUCTION

Tufting 1/10" twist pile

## PILE MATERIAL

100% PA solution dyed

## PRIMARY BACKING

Non woven PES

## SECONDARY BACKING

Action Back

## PILE WEIGHT

Ca. 1 270 gr/m<sup>2</sup>

## TOTAL WEIGHT

Ca. 2 200 gr/m<sup>2</sup>

## PILE HEIGHT

Ca. 6.7 mm

## TOTAL HEIGHT

Ca. 9 mm

## TUFT DENSITY

Ca. 182 000/m<sup>2</sup>

## PILE DENSITY

Ca. 0.163 g/cm<sup>3</sup>

## CLASSIFICATION

EN 1307  
33 - LC5

## CASTOR CHAIR SUITABILITY

EN 985  
A: intensive use

## STAIR SUITABILITY

EN 1963  
A: intensive use

## PERMANENTLY ANTISTATIC

ISO 6356  
< 2 kV

## IMPACT NOISE RATING

ISO 140-8  
28 dB ΔLw

## SOUND ABSORPTION

ISO 354  
0.20 aw

## THERMAL RESISTANCE

ISO 8302  
0.113 m<sup>2</sup> K/W

## FASTNESS TO LIGHT

ISO 105-B02  
≥ 7

## COLOUR FASTNESS TO WATER

EN ISO 105-E01  
≥ 4-5

## RUBBING FASTNESS

EN ISO 105-X12  
≥ 4

## FIRE RESISTANCE

EN 13501-1  
Cfl-s1 if glued

## NUMBER OF COLOURS

12

## WIDTH

EN ISO 3018  
ca. 400 cm



02/19 We reserve all rights for technical improvements.



A photograph of a dense, lush green forest. The foreground is dominated by large, dark tree trunks with prominent, spreading roots. The ground is covered in a thick carpet of vibrant green ferns. The background shows more trees and foliage, creating a sense of depth and a rich, natural environment.

# *e-major*

## 2/ *e-major*

A level-loop pile in a subtle grain effect, *e-major* brings a contemporary aesthetic that minimises the appearance of footprints. Remarkably resistant to sunlight and easy to clean, *e-major* is an ideal fit in high-traffic areas such as hotel lobbies or airport halls. Make a lasting impression with the majestic design of *e-major*.



# *e-major*



e-major 78



e-major 72





# e-major | COLOURS



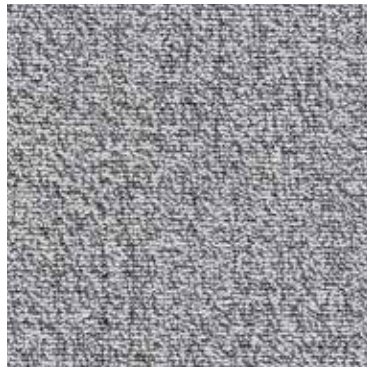
e-major 32



e-major 47



e-major 93



e-major 90



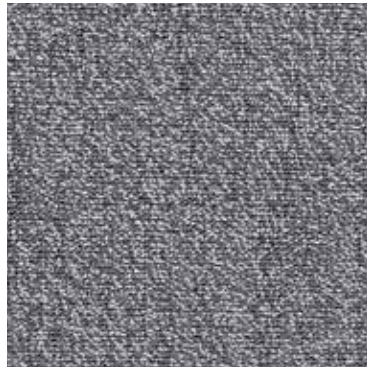
e-major 12



e-major 98



e-major 96



e-major 97



e-major 72



e-major 78

# e-major | TECHNICAL SPECIFICATIONS

## CONSTRUCTION

Tufting 1/10" textured loop

## PILE MATERIAL

100% PA solution dyed

## PRIMARY BACKING

Non woven PES

## SECONDARY BACKING

Action Back

## PILE WEIGHT

Ca. 640 gr/m<sup>2</sup>

## TOTAL WEIGHT

Ca. 2 050 gr/m<sup>2</sup>

## PILE HEIGHT

Ca. 2.8 mm

## TOTAL HEIGHT

Ca. 6 mm

## TUFT DENSITY

Ca. 140 000/m<sup>2</sup>

## PILE DENSITY

Ca. 0.125 g/cm<sup>3</sup>

## CLASSIFICATION

EN 1307

33 - LC1

## CASTOR CHAIR SUITABILITY

EN 985

A: intensive use

## STAIR SUITABILITY

EN 1963

A: intensive use

## PERMANENTLY ANTISTATIC

ISO 6356

< 2 kV

## IMPACT NOISE RATING

ISO 140-8

24 dB ΔLw

## SOUND ABSORPTION

ISO 354

0.15 αw

## THERMAL RESISTANCE

ISO 8302

0.073 m<sup>2</sup> K/W

## FASTNESS TO LIGHT

ISO 105-B02

≥ 7

## COLOUR FASTNESS TO WATER

EN ISO 105-E01

≥ 4-5

## RUBBING FASTNESS

EN ISO 105-X12

≥ 4

## FIRE RESISTANCE

EN 13501-1

Cfl-s1

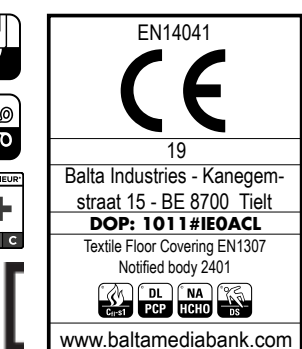
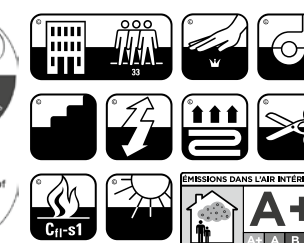
## NUMBER OF COLOURS

10

## WIDTH

EN ISO 3018

ca. 400 cm







# *e-grid*

## 3/ *e-grid*

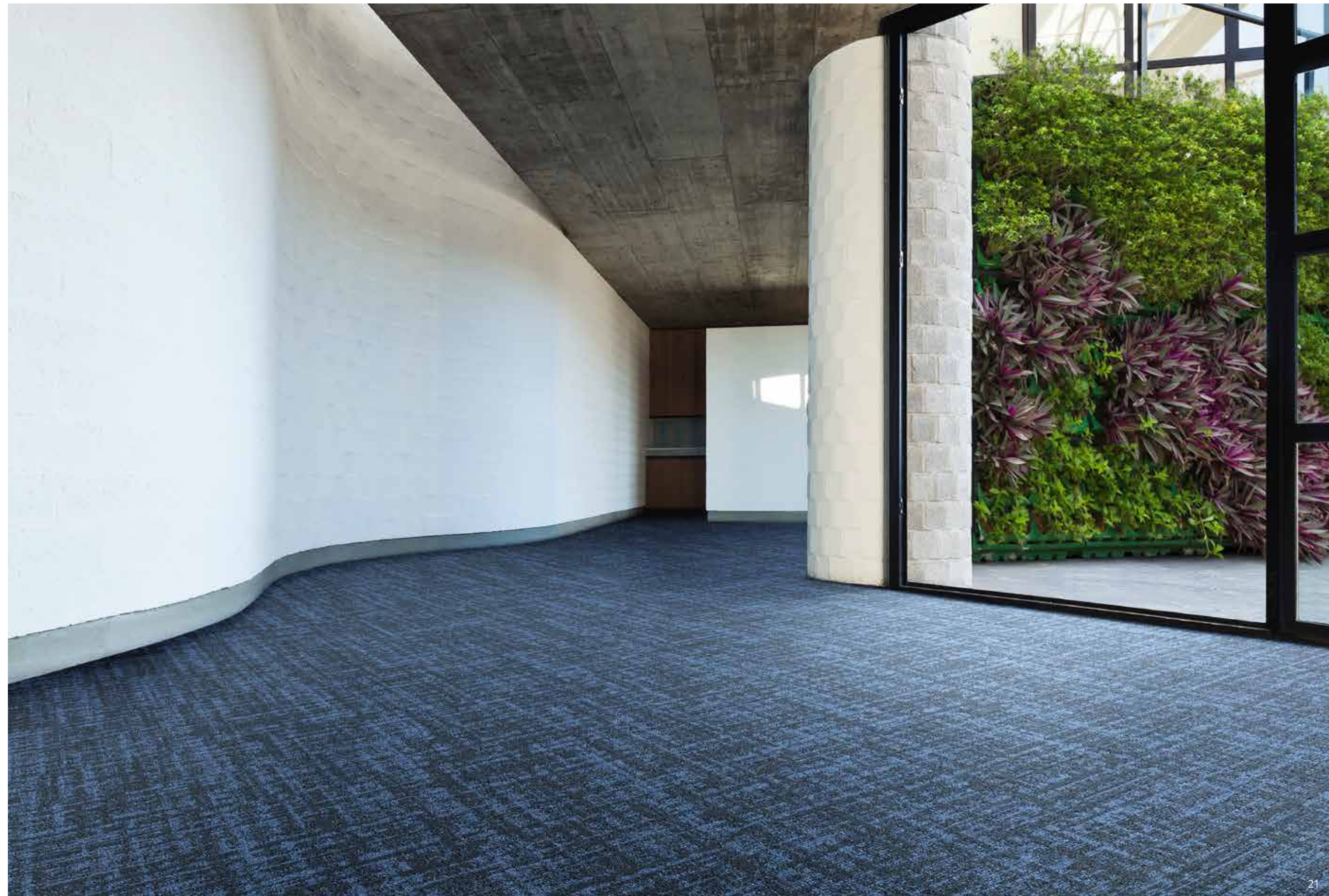
Combining tip-sheared texture with a fascinating pattern, *e-grid* blends the classic and contemporary. With a velvet-look that's Class 33 Heavy Commercial certified, *e-grid* brings luxury to high-traffic areas. Go for durability, light-fastness and style with *e-grid*.



# *e-grid*



*e-grid* 78





# e-grid | COLOURS



e-grid 95



e-grid 98



e-grid 78



e-grid 93



e-grid 49

# e-grid | TECHNICAL SPECIFICATIONS

## CONSTRUCTION

Tufting 1/12" i-tuft

## PILE MATERIAL

100% PA solution dyed

## PRIMARY BACKING

Non woven

## SECONDARY BACKING

Action Back

## PILE WEIGHT

Ca. 780 gr/m<sup>2</sup>

## TOTAL WEIGHT

2 100 gr/m<sup>2</sup>

## PILE HEIGHT

Ca. 3.4 mm

## TOTAL HEIGHT

Ca. 6.3 mm

## TUFT DENSITY

Ca. 225 600/m<sup>2</sup>

## PILE DENSITY

Ca. 0.143 g/cm<sup>3</sup>

## CLASSIFICATION

EN 1307

33 - LC2

## CASTOR CHAIR SUITABILITY

EN 985

A: intensive use

## STAIR SUITABILITY

EN 1963

A: intensive use

## PERMANENTLY ANTISTATIC

ISO 6356

< 2 kV

## IMPACT NOISE RATING

ISO 140-8

26 dB ΔLw

## SOUND ABSORPTION

ISO 354

0.20 aw

## THERMAL RESISTANCE

ISO 8302

0.09 m<sup>2</sup>K/W

## FASTNESS TO LIGHT

ISO 105-B02

≥ 7

## COLOUR FASTNESS TO WATER

EN ISO 105-E01

≥ 4-5

## RUBBING FASTNESS

EN ISO 105-X12

≥ 4

## FIRE RESISTANCE

EN 13501-1

Cfl-s1

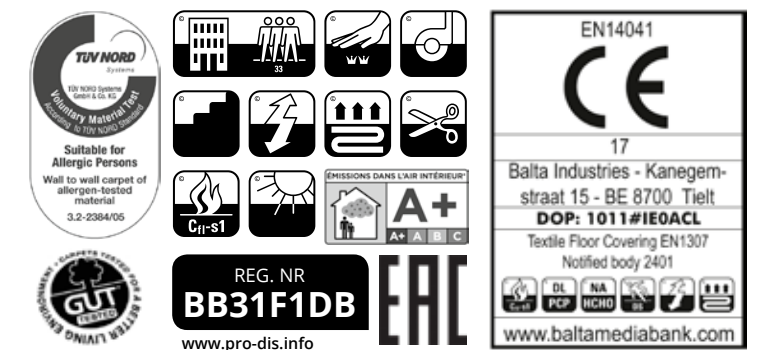
## NUMBER OF COLOURS

5

## WIDTH

EN ISO 3018

ca. 400 cm



05/18 We reserve all rights for technical improvements.





*e-rock*

# 4 / *e-rock*

Solid as a rock, this is a design that is sure to make a statement in any room. A tip-sheared texture brings a luxurious velvet surface that provides wonderful underfoot comfort and acoustic absorption. A modern, strong look that guarantees long-lasting colour.



***e-rock***



e-rock 49



# e-rock | COLOURS



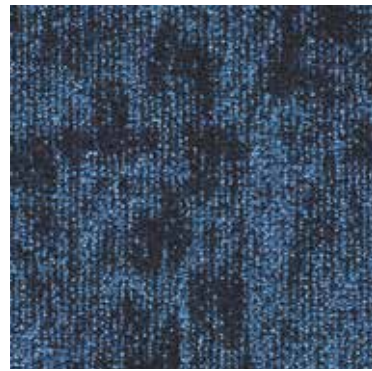
e-rock 93



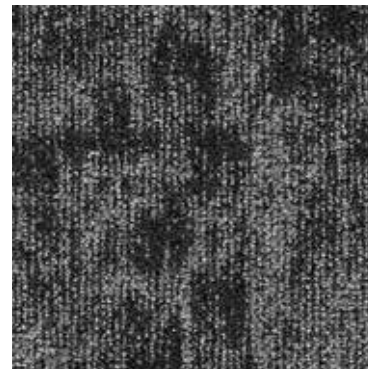
e-rock 95



e-rock 49



e-rock 78



e-rock 98

# e-rock | TECHNICAL SPECIFICATIONS

## CONSTRUCTION

Tufting 1/12" i-tuft

## PILE MATERIAL

100% PA solution dyed

## PRIMARY BACKING

Non woven

## SECONDARY BACKING

Action Back

## PILE WEIGHT

Ca. 720 gr/m<sup>2</sup>

## TOTAL WEIGHT

Ca. 2 250 gr/m<sup>2</sup>

## PILE HEIGHT

Ca. 3.2 mm

## TOTAL HEIGHT

Ca. 6.2 mm

## TUFT DENSITY

Ca. 235 000/m<sup>2</sup>

## PILE DENSITY

Ca. 0.140 g/cm<sup>3</sup>

## CLASSIFICATION

EN 1307

33 - LC2

## CASTOR CHAIR SUITABILITY

EN 985

A: intensive use

## STAIR SUITABILITY

EN 1963

A: intensive use

## PERMANENTLY ANTISTATIC

ISO 6356

< 2 kV

## IMPACT NOISE RATING

ISO 140-8

24 dB ΔLw

## SOUND ABSORPTION

ISO 354

0.20 αw

## THERMAL RESISTANCE

ISO 8302

0.072 m<sup>2</sup> K/W

## FASTNESS TO LIGHT

ISO 105-B02

≥ 7

## COLOUR FASTNESS TO WATER

EN ISO 105-E01

≥ 4-5

## RUBBING FASTNESS

EN ISO 105-X12

≥ 4

## FIRE RESISTANCE

EN 13501-1

Cfl-s1

## NUMBER OF COLOURS

5

## WIDTH

EN ISO 3018

ca. 400 cm

**TUV NORD**  
 ISO 9001:2015  
 ISO 14001:2015  
 ISO 45001:2018  
 Suitable for Allergic Persons  
 Wall to wall carpet of allergen-tested material  
 3.2-2304/05

**CE**  
 EN14041  
 18  
 Balta Industries - Kanegem-straat 15 - BE 8700 Tielt  
**DOP: 1011#IEOACL**  
 Textile Floor Covering EN1307  
 Notified body 2401  
 www.baltamediabank.com

**REG. NR**  
**BBF9F1A6**  
 www.pro-dis.info

**EAC**

**ISO 9001**  
**ISO 14001**  
**ISO 45001**

**CE**  
**EN14041**  
**18**  
**Balta Industries - Kanegem-straat 15 - BE 8700 Tielt**  
**DOP: 1011#IEOACL**  
 Textile Floor Covering EN1307  
 Notified body 2401  
 www.baltamediabank.com

**DL**  
**PCP**  
**NA**  
**HCHO**  
**BS**

05/18 We reserve all rights for technical improvements.

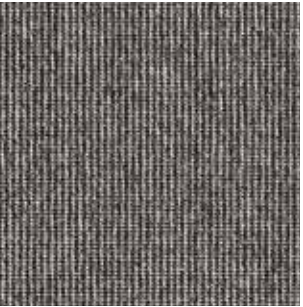


# *e-weave*

## 5/ *e-weave*

Nature meets modernity in *e-weave*, possessing the collection's finest weave. This two-tone design displays a subtle elegance that never goes out of style. With a striking minimalist look, *e-weave* delivers impressive wear-resistance and durability.



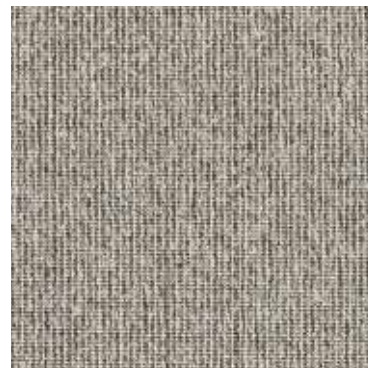


e-weave 96





e-weave 34



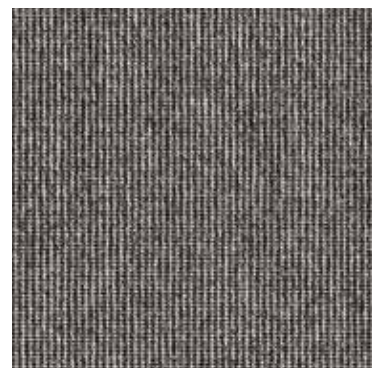
e-weave 93



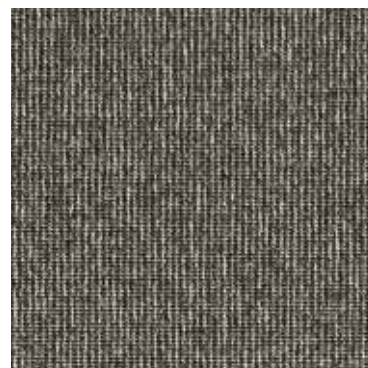
e-weave 49



e-weave 99



e-weave 96



e-weave 98



e-weave 79



e-weave 78

**CONSTRUCTION**

Tufting 5/64" minituft

**PILE MATERIAL**

100% PA solution dyed

**PRIMARY BACKING**

Non woven PES

**SECONDARY BACKING**

Action Back

**PILE WEIGHT**

Ca. 500 gr/m<sup>2</sup>

**TOTAL WEIGHT**

Ca. 2 095 gr/m<sup>2</sup>

**PILE HEIGHT**

Ca. 1.1 mm

**TOTAL HEIGHT**

Ca. 5.1 mm

**TUFT DENSITY**

Ca. 200 000/m<sup>2</sup>

**PILE DENSITY**

Ca. 0.156 g/cm<sup>3</sup>

**CLASSIFICATION**

EN 1307

33 - LC1

**CASTOR CHAIR SUITABILITY**

EN 985

A: intensive use

**STAIR SUITABILITY**

EN 1963

A: intensive use

**PERMANENTLY ANTISTATIC**

ISO 6356

< 2 kV

**IMPACT NOISE RATING**

ISO 140-8

18 dB ΔLw

**SOUND ABSORPTION**

ISO 354

0.15 aw

**THERMAL RESISTANCE**

ISO 8302

0.05 m<sup>2</sup> K/W

**FASTNESS TO LIGHT**

ISO 105-B02

≥ 7

**COLOUR FASTNESS TO WATER**

EN ISO 105-E01

≥ 4-5

**RUBBING FASTNESS**

EN ISO 105-X12

≥ 4

**FIRE RESISTANCE**

N 13501-1

Cfl-s1 (if glued)

**NUMBER OF COLOURS**

6

**WIDTH**

EN ISO 3018

ca. 400 cm







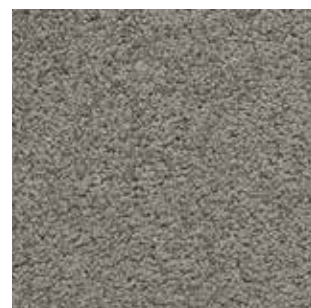
# *e-touch*

## 6/ *e-touch*

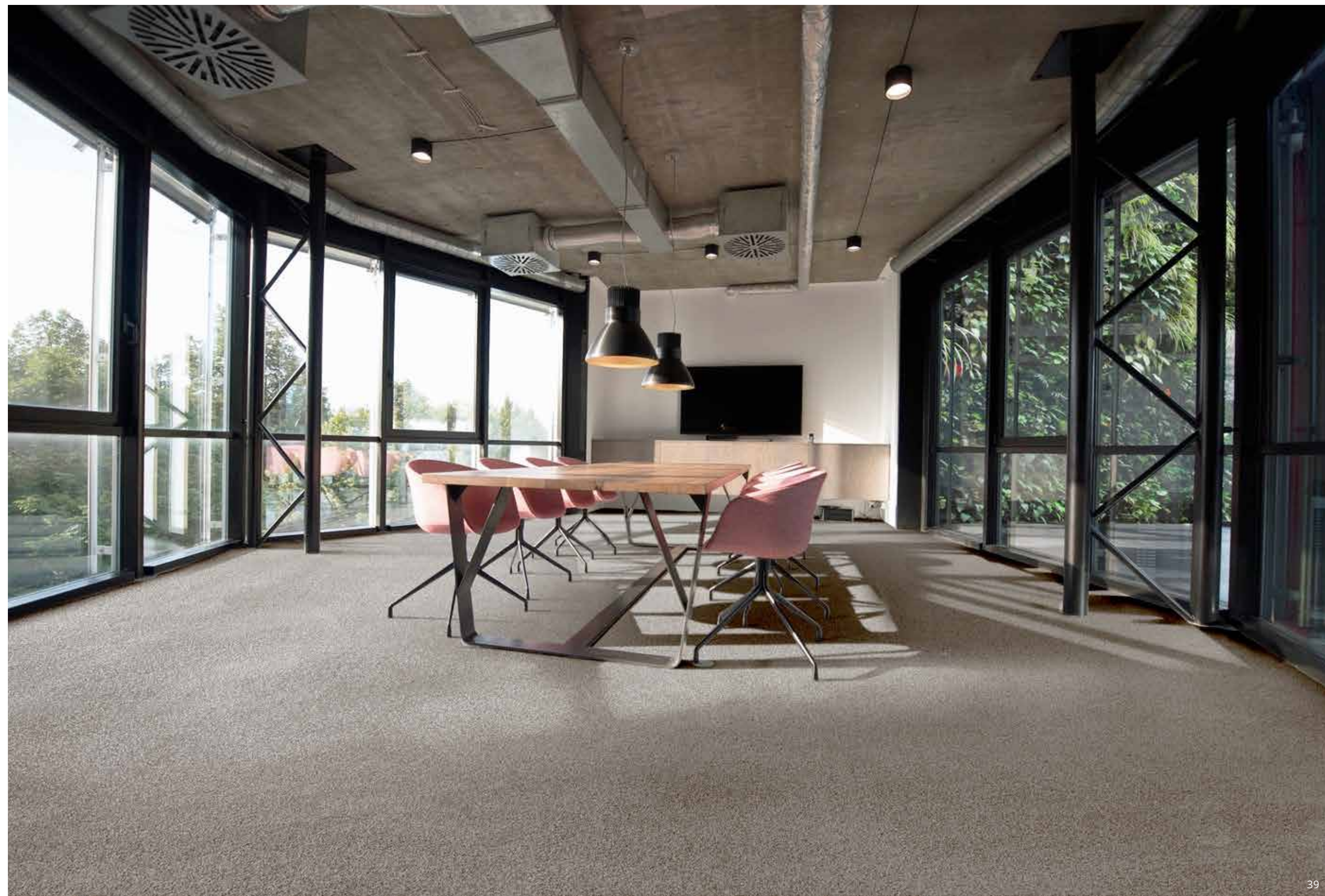
Enjoy the sublime comfort of *e-touch*'s luxurious quality. Soft underfoot, *e-touch* offers excellent acoustic absorption and a sumptuous feel. Impressively quiet and with supreme performance, *e-touch* is a win-win in any commercial space.



# *e-touch*



e-touch 94





# e-touch | COLOURS



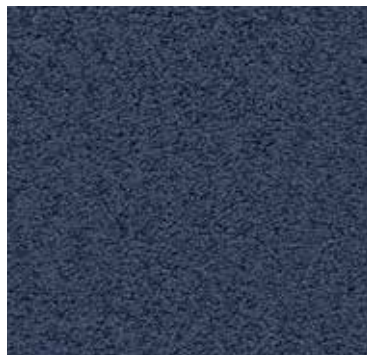
e-touch 33



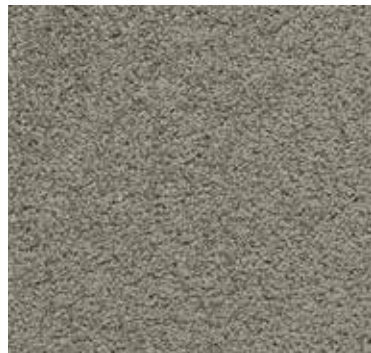
e-touch 34



e-touch 63



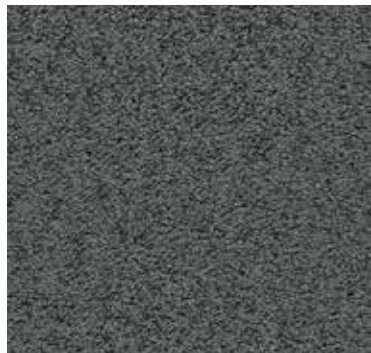
e-touch 77



e-touch 93



e-touch 94



e-touch 98



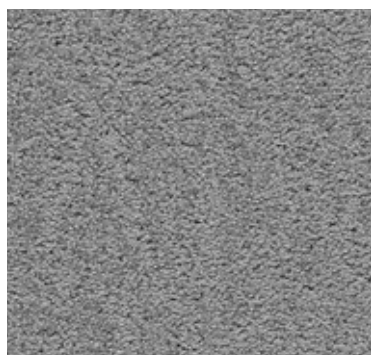
e-touch 99



e-touch 190



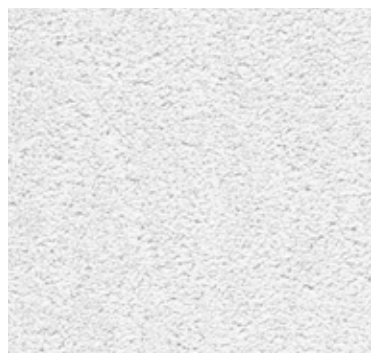
e-touch 96



e-touch 95



e-touch 97



e-touch 90

# e-touch | TECHNICAL SPECIFICATIONS

## CONSTRUCTION

Tufting 1/8" saxony fris 

## PILE MATERIAL

100% PA Solution Dyed

## PRIMARY BACKING

Non woven PES

## SECONDARY BACKING

Action Back

## PILE WEIGHT

Ca. 1 575 gr/m<sup>2</sup>

## TOTAL WEIGHT

Ca. 2 405 gr/m<sup>2</sup>

## PILE HEIGHT

Ca. 15 mm

## TOTAL HEIGHT

Ca. 18 mm

## TUFT DENSITY

Ca. 195 000/m<sup>2</sup>

## PILE DENSITY

Ca. 0.132 g/cm<sup>3</sup>

## CLASSIFICATION

EN 1307

32 - LC5

## CASTOR CHAIR SUITABILITY

EN 985

B: occasional use

## STAIR SUITABILITY

EN 1963

B: occasional use

## PERMANENTLY ANTISTATIC

ISO 6356

< 2 kV

## IMPACT NOISE RATING

ISO 140-8

27 dB ΔLw

## SOUND ABSORPTION

ISO 354

0.25 αw

## THERMAL RESISTANCE

ISO 8302

0,188 m<sup>2</sup> K/W

## FASTNESS TO LIGHT

ISO 105-B02

≥ 7

## COLOUR FASTNESS TO WATER

EN ISO 105-E01

≥ 4-5

## RUBBING FASTNESS

EN ISO 105-X12

≥ 4

## FIRE RESISTANCE

EN 13501-1

Cfl-s1

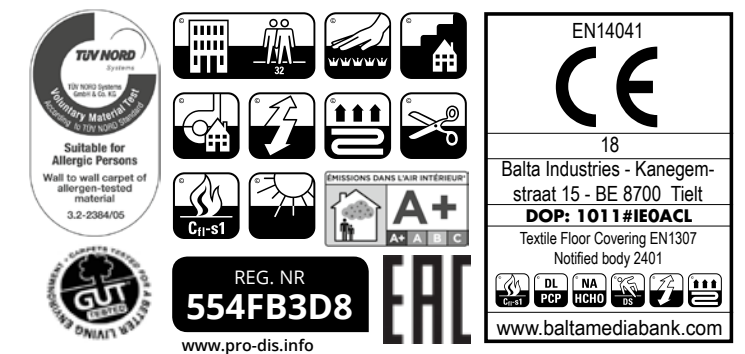
## NUMBER OF COLOURS

13

## WIDTH

EN ISO 3018

ca. 400 cm



05/18 We reserve all rights for technical improvements.

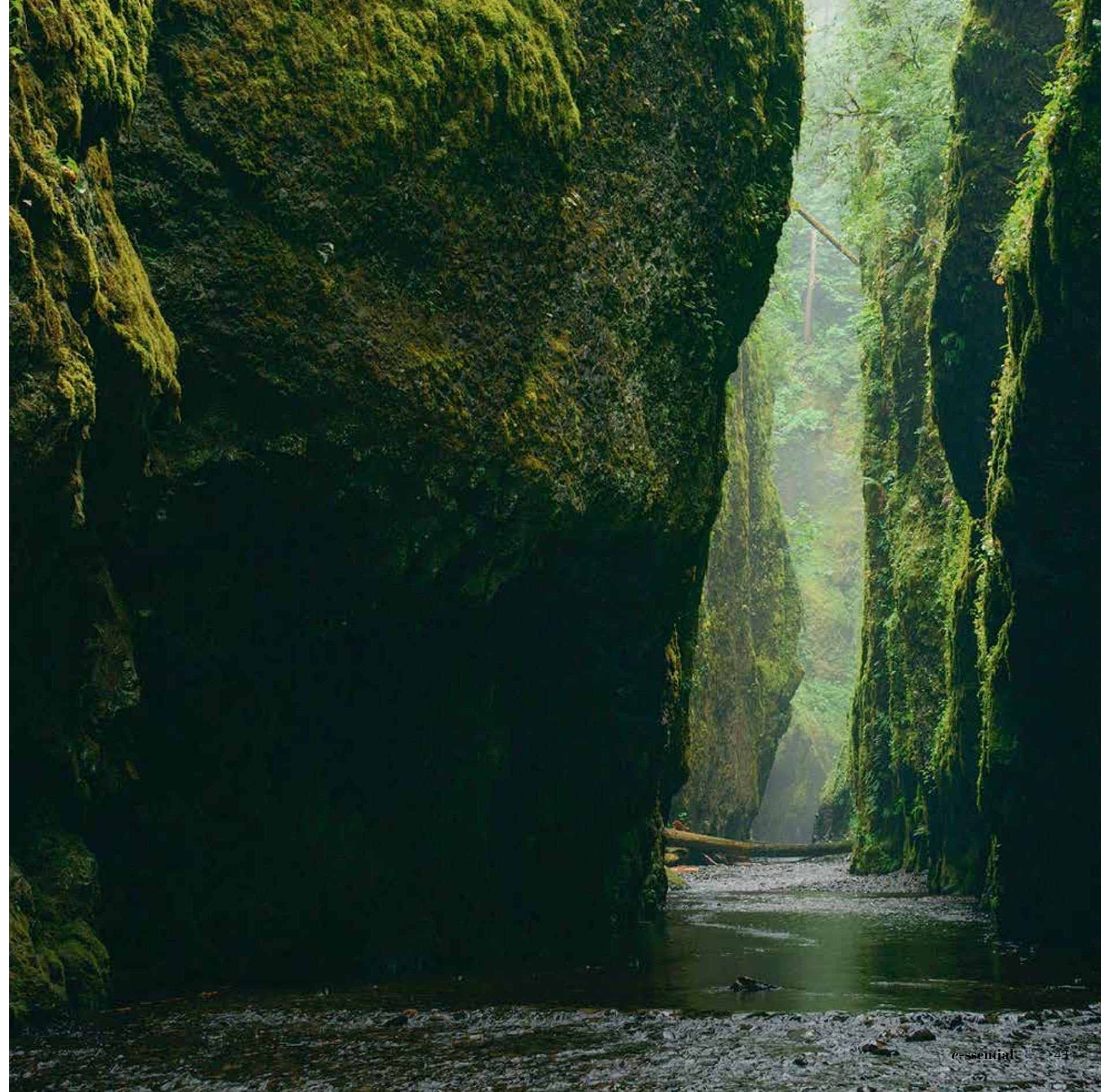




Is e-ssential your natural choice?  
Let's talk!

[INFO@ARCEDITION.COM](mailto:INFO@ARCEDITION.COM)

Balta Industries nv  
Kanegemstraat 15 - B-8700 Tielt - Belgium  
T +32 (0)51 42 44 11 - F +32 (0)51 42 44 85  
[info@arcedition.com](mailto:info@arcedition.com) - [www.arcedition.com](http://www.arcedition.com)





[www.arcedition.com](http://www.arcedition.com)

 arc edition®