



æ

*e*-ssential

THE ELEMENTARY COLLECTION



# *e-ssential*

THE ELEMENTARY COLLECTION

The one place that we find everything essential to our existence, is **nature**.

An oasis of inspiration and comfort, *e-ssential* introduces **five carpet styles** made with **100% PA solution-dyed fibre**. Providing **excellent lightfastness**, *e-ssential* is a durable and **environmentally-friendly choice**, especially in areas exposed to strong sunlight.

What's more; *e-blend*, *e-blitz*, *e-check*, *e-firm*, *e-force*, *e-major*, *e-weave* feature impressive stain-resistance and are easy to maintain. **Easy to clean, strong and comfortable**, this carpet collection is an **elementary choice** for commercial spaces.



AN OASIS OF INSPIRATION

## Index

<b>1/ e-blend</b>	6
<b>2/ e-blitz</b>	12
<b>3/ e-check</b>	18
<b>4/ e-firm</b>	24
<b>5/ e-force</b>	30
<b>6/ e-major</b>	36
<b>7/ e-weave</b>	42

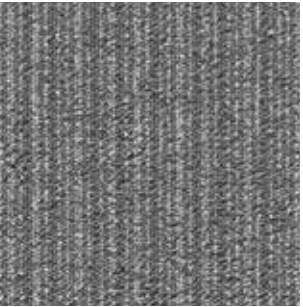
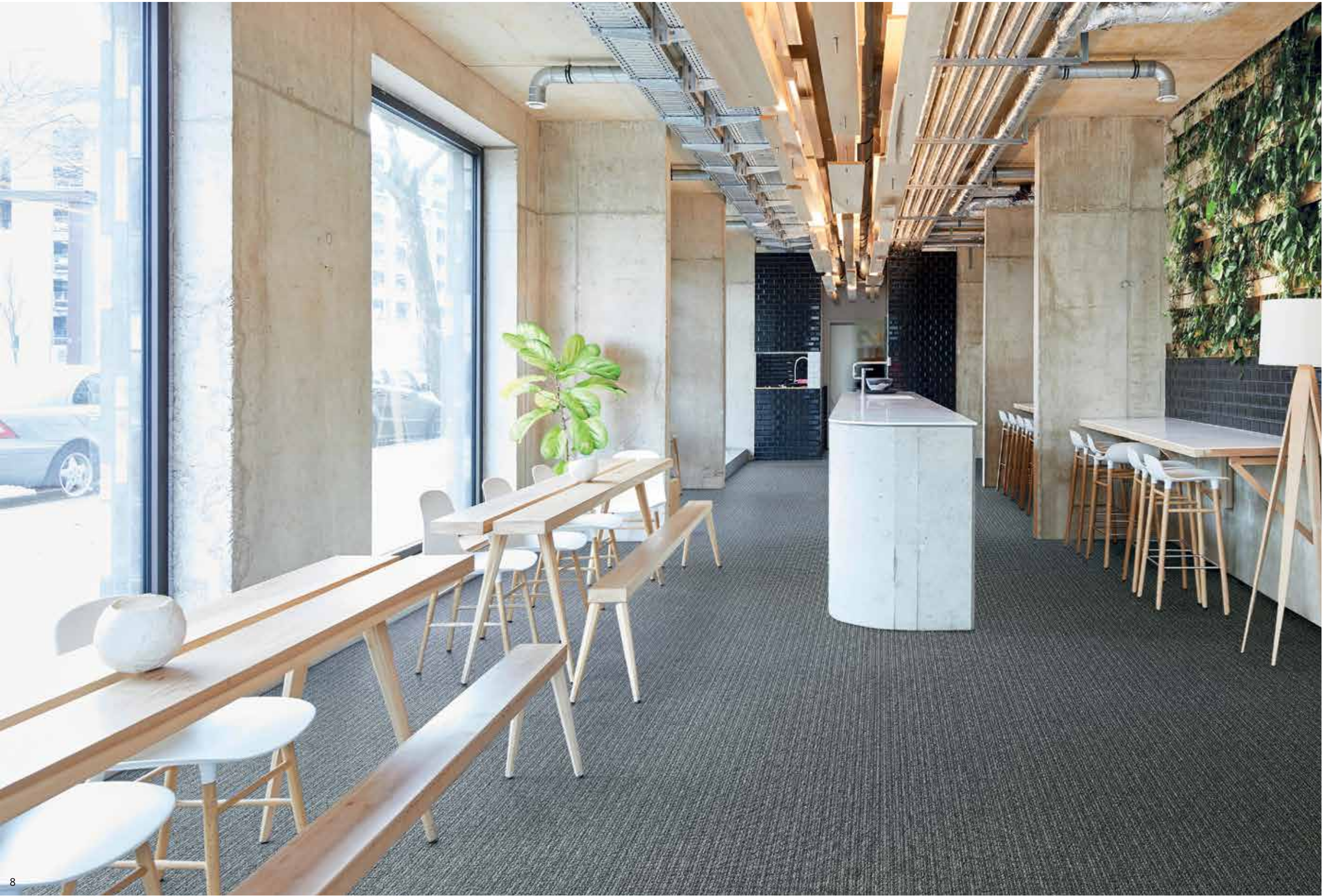
# *e-blend*



1/

## ***e-blend***

2 colours blend into a new texture loop pile that features a woven, linear aspect and a dense, performance surface. A highly functional carpet offering bold shades as well as classical tones.



e-blend 942

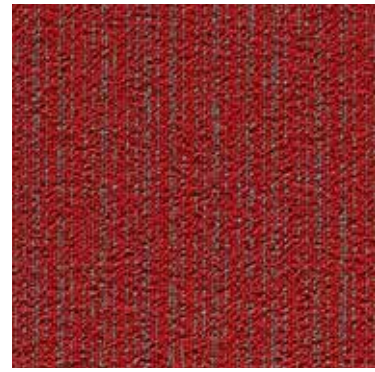
# e-blend | COLOURS



e-blend 130



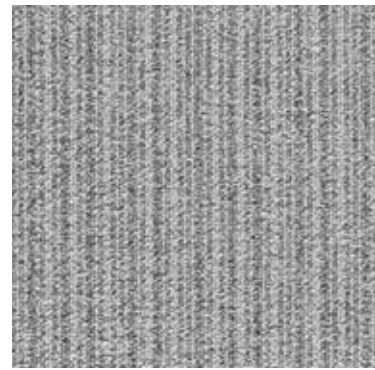
e-blend 306



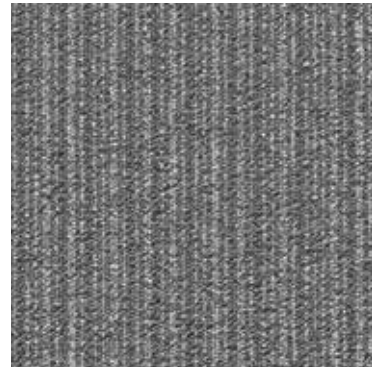
e-blend 332



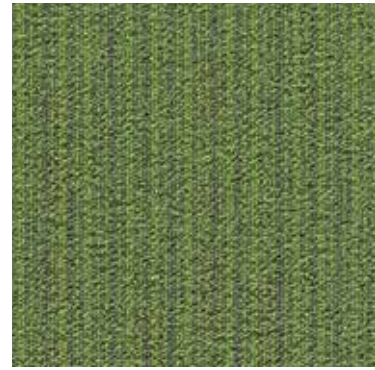
e-blend 550



e-blend 914



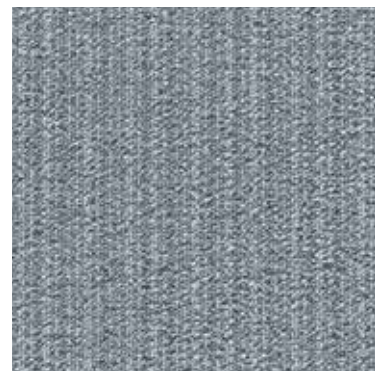
e-blend 942



e-blend 669



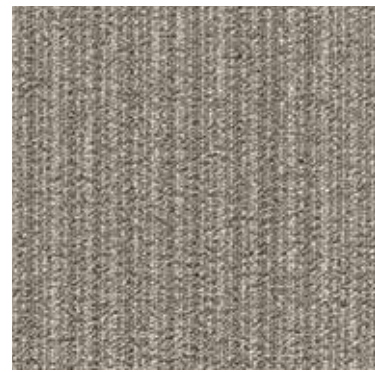
e-blend 578



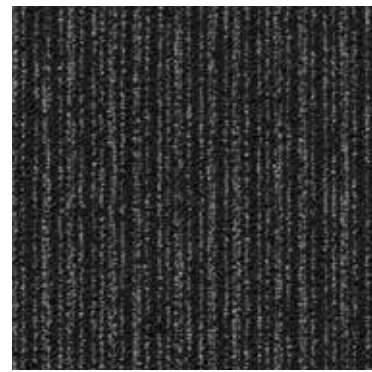
e-blend 957



e-blend 961



e-blend 106



e-blend 991

# e-blend | TECHNICAL SPECIFICATIONS

## CONSTRUCTION

Tufting 1/10" loop pile

## PILE MATERIAL

100% PA solution dyed

## PRIMARY BACKING

Non woven PES

## SECONDARY BACKING

Action Back

## PILE WEIGHT

Ca. 540 gr/m<sup>2</sup>

## TOTAL WEIGHT

Ca. 1 800 gr/m<sup>2</sup>

## PILE HEIGHT

Ca. 3 mm

## TOTAL HEIGHT

Ca. 5,4 mm

## TUFT DENSITY

Ca. 180 000/m<sup>2</sup>

## PILE DENSITY

Ca. 0.111 g/cm<sup>3</sup>

## CLASSIFICATION

EN 1307

33 - LC1

## CASTOR CHAIR SUITABILITY

EN 985

A: intensive use

## STAIR SUITABILITY

EN 1963

A: intensive use

## PERMANENTLY ANTISTATIC

ISO 6356

< 2 kV

## IMPACT NOISE RATING

ISO 140-8

25 dB ΔLw

## SOUND ABSORPTION

ISO 354

0.15 aw

## THERMAL RESISTANCE

ISO 8302

0.07 m<sup>2</sup> K/W

## FASTNESS TO LIGHT

ISO 105-B02

≥ 7

## COLOUR FASTNESS TO WATER

EN ISO 105-E01

≥ 4-5

## RUBBING FASTNESS

EN ISO 105-X12

≥ 4

## FIRE RESISTANCE

EN 13501-1

Bfl-s1 if glued

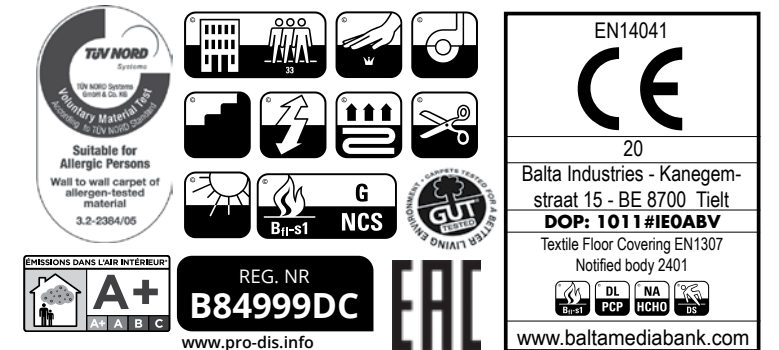
## NUMBER OF COLOURS

12

## WIDTH

EN ISO 3018

ca. 400 cm





*e-blitz*

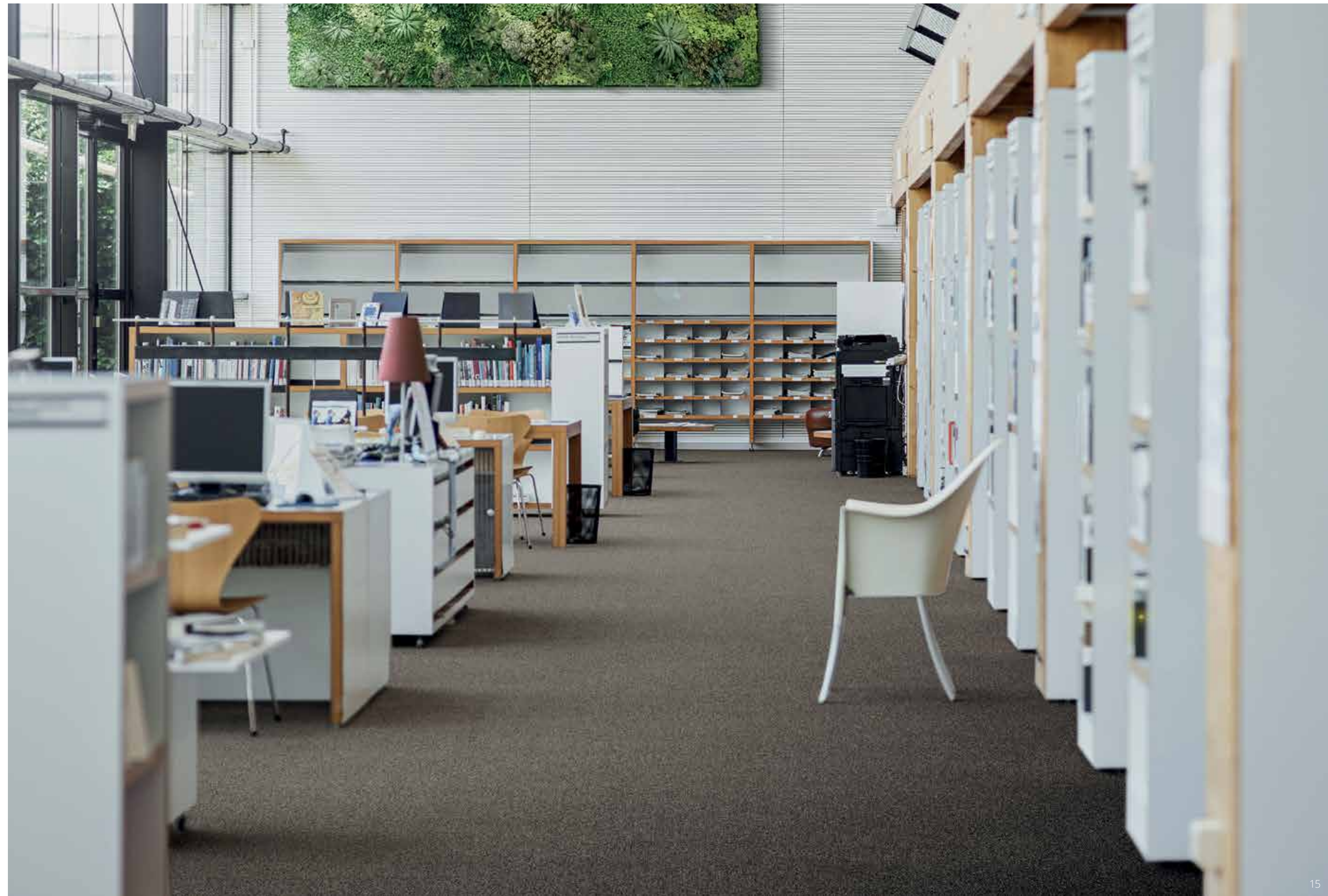
## 2/ *e-blitz*

Solution dyed polyamide delivers impressive performance to the mottled texture of *e-blitz*. A timeless look that brings the essence of flooring in a ranging colour palette embracing rich colour and practical neutrals.

*e-blitz*



e-blitz 46







**CONSTRUCTION**

Tufting 1/10" loop pile

**PILE MATERIAL**

100% PA solution dyed

**PRIMARY BACKING**

Non woven PES

**SECONDARY BACKING**

Action Back

**PILE WEIGHT**

Ca. 540 gr/m<sup>2</sup>

**TOTAL WEIGHT**

Ca. 1 800 gr/m<sup>2</sup>

**PILE HEIGHT**

Ca. 3 mm

**TOTAL HEIGHT**

Ca. 5,4 mm

**TUFT DENSITY**

Ca. 180 000/m<sup>2</sup>

**PILE DENSITY**

Ca. 0.111 g/cm<sup>3</sup>

**CLASSIFICATION**

EN 1307

33 - LC1

**CASTOR CHAIR SUITABILITY**

EN 985

A: intensive use

**STAIR SUITABILITY**

EN 1963

A: intensive use

**PERMANENTLY ANTISTATIC**

ISO 6356

< 2 kV

**IMPACT NOISE RATING**

ISO 140-8

25 dB ΔLw

**SOUND ABSORPTION**

ISO 354

0.15 αw

**THERMAL RESISTANCE**

ISO 8302

0.070 m<sup>2</sup> K/W

**FASTNESS TO LIGHT**

ISO 105-B02

≥ 7

**COLOUR FASTNESS TO WATER**

EN ISO 105-E01

≥ 4-5

**RUBBING FASTNESS**

EN ISO 105-X12

≥ 4

**FIRE RESISTANCE**

EN 13501-1

Bfl-s1 (if glued)

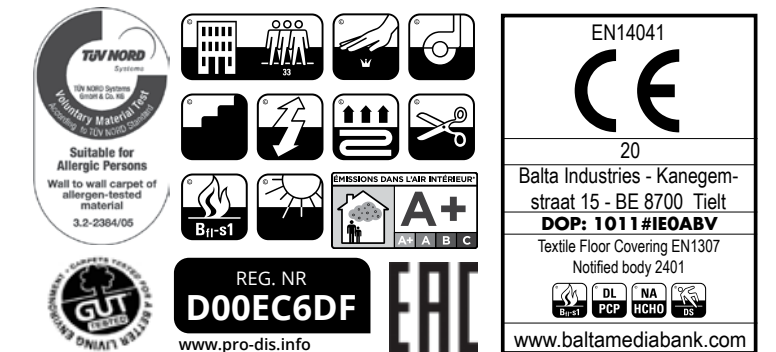
**NUMBER OF COLOURS**

18

**WIDTH**

EN ISO 3018

ca. 400 cm





# *e-check*

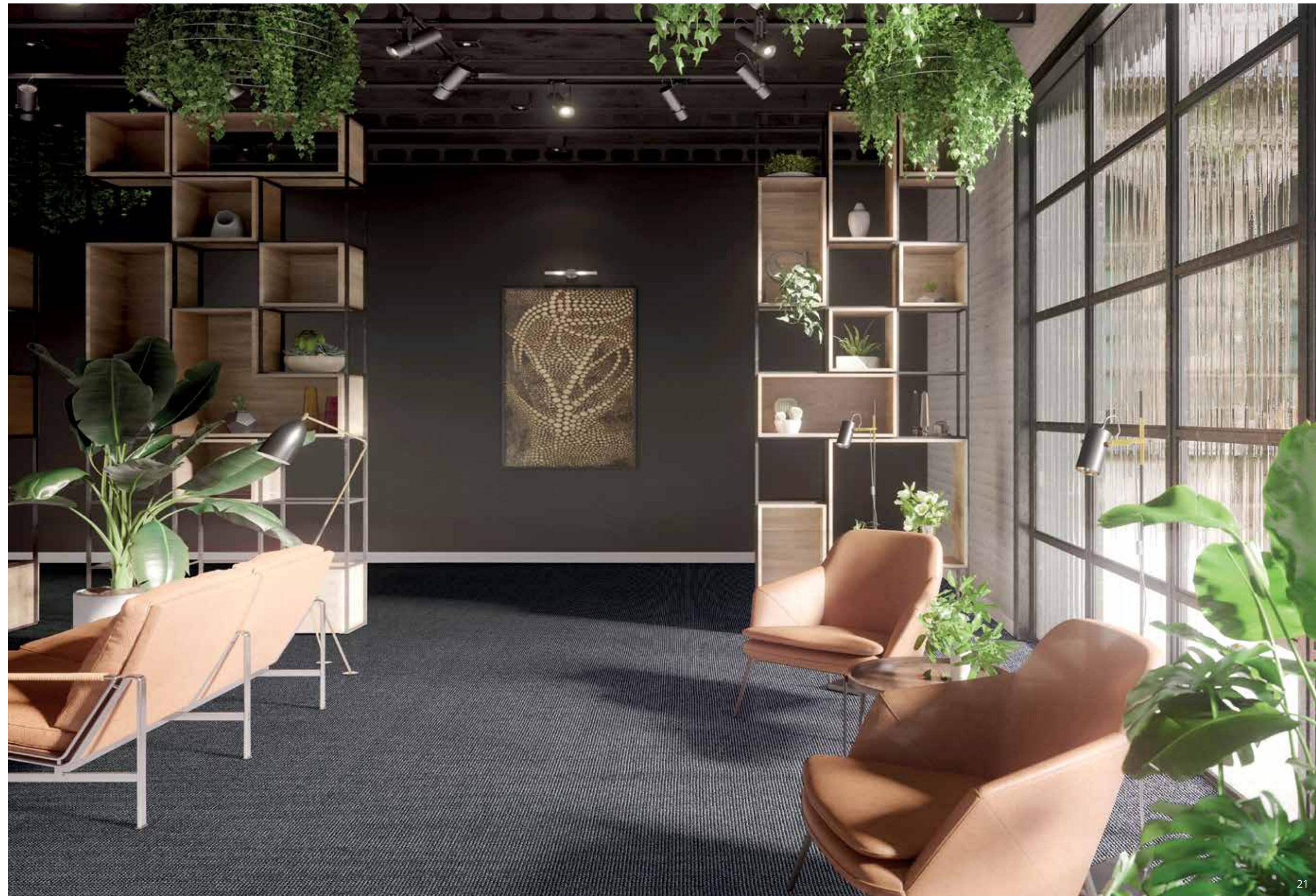
## 3/ *e-check*

Made from two yarns of different colour, this floor offers a woven aspect in a range of natural and contemporary shades. Its elegant, textile look adds a perfect balance to harmonious interior decorations.

# e-check



e-check 98





**CONSTRUCTION**

Tufting 1/10" loop pile

**PILE MATERIAL**

100% PA solution dyed

**PRIMARY BACKING**

Woven PP

**SECONDARY BACKING**

Action Back

**PILE WEIGHT**

Ca. 625 gr/m<sup>2</sup>

**TOTAL WEIGHT**

1 900 gr/m<sup>2</sup>

**PILE HEIGHT**

Ca. 3 mm

**TOTAL HEIGHT**

Ca. 6 mm

**TUFT DENSITY**

Ca. 225 000/m<sup>2</sup>

**PILE DENSITY**

Ca. 0.123 g/cm<sup>3</sup>

**CLASSIFICATION**

EN 1307

33 - LC1

**CASTOR CHAIR SUITABILITY**

EN 985

A: intensive use

**STAIR SUITABILITY**

EN 1963

A: intensive use

**PERMANENTLY ANTISTATIC**

ISO 6356

< 2 kV

**IMPACT NOISE RATING**

ISO 140-8

25 dB ΔLw

**SOUND ABSORPTION**

ISO 354

0.15 aw

**THERMAL RESISTANCE**

ISO 8302

0.07 m<sup>2</sup>K/W

**FASTNESS TO LIGHT**

ISO 105-B02

≥ 7

**COLOUR FASTNESS TO WATER**

EN ISO 105-E01

≥ 4-5

**RUBBING FASTNESS**

EN ISO 105-X12

≥ 4

**FIRE RESISTANCE**

EN 13501-1

Cfl-s1

**NUMBER OF COLOURS**

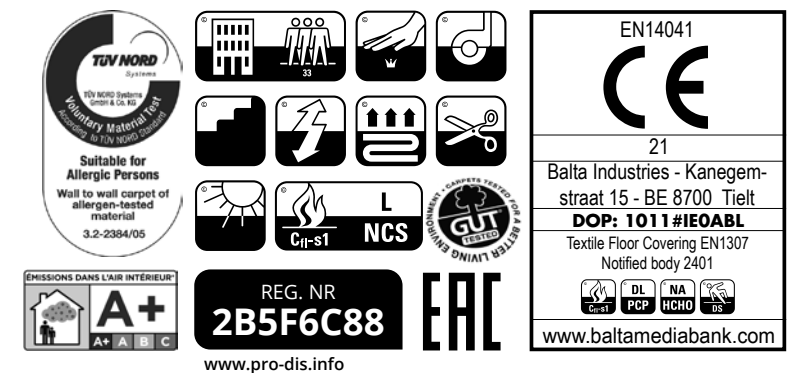
18

**WIDTH**

EN ISO 3018

ca. 400 cm (7 colours

also in 500 cm)

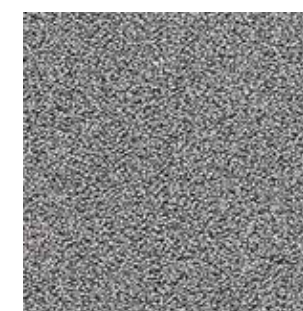




*e-firm*

# 4/ *e-firm*

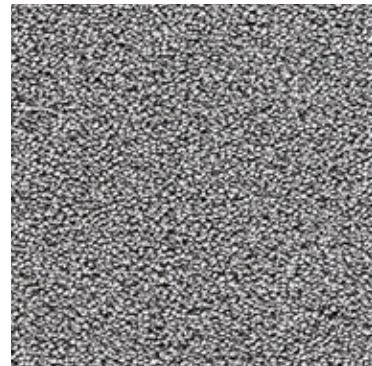
A brand new, two-tone twisted loop pile featuring a top-of-the range construction, the strongest e-ssential has on offer. Its classical & natural colours give a wide choice to uplift floor spaces & make them last in time.



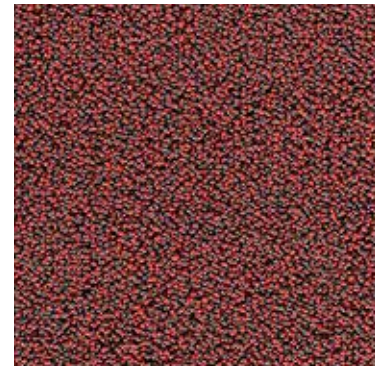
e-firm 93



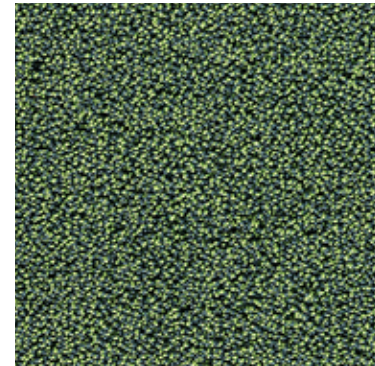
e-firm 39



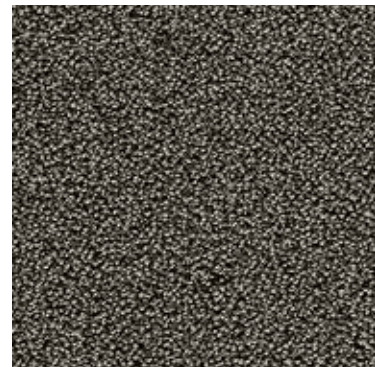
e-firm 93



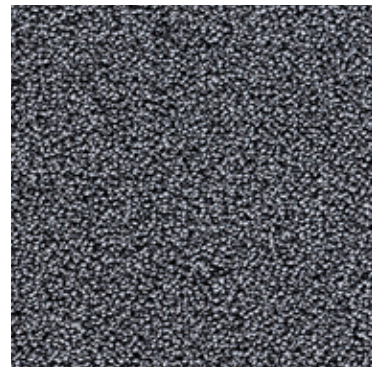
e-firm 11



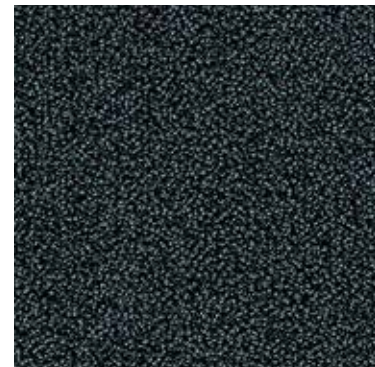
e-firm 22



e-firm 49



e-firm 95



e-firm 97



e-firm 76



e-firm 48



e-firm 96

**CONSTRUCTION**

Tufting 1/10" loop pile

**PILE MATERIAL**

100% PA 6 IMPREL®

**PRIMARY BACKING**

Non woven PES

**SECONDARY BACKING**

Action Back

**PILE WEIGHT**

Ca. 945 gr/m<sup>2</sup>

**TOTAL WEIGHT**

Ca. 2 250 gr/m<sup>2</sup>

**PILE HEIGHT**

Ca. 4 mm

**TOTAL HEIGHT**

Ca. 6.7 mm

**TUFT DENSITY**

Ca. 170 000/m<sup>2</sup>

**PILE DENSITY**

Ca. 0.169 g/cm<sup>3</sup>

**CLASSIFICATION**

EN 1307

33 - LC2

**CASTOR CHAIR SUITABILITY**

EN 985

A: intensive use

**STAIR SUITABILITY**

EN 1963

A: intensive use

**PERMANENTLY ANTISTATIC**

ISO 6356

< 2 kV

**IMPACT NOISE RATING**

ISO 140-8

25 dB ΔLw

**SOUND ABSORPTION**

ISO 354

0.15 αw

**THERMAL RESISTANCE**

ISO 8302

0.08 m<sup>2</sup> K/W

**FASTNESS TO LIGHT**

ISO 105-B02

≥ 7

**COLOUR FASTNESS TO WATER**

EN ISO 105-E01

≥ 4-5

**RUBBING FASTNESS**

EN ISO 105-X12

≥ 4

**FIRE RESISTANCE**

EN 13501-1

Cfl-s1

**NUMBER OF COLOURS**

10

**WIDTH**

EN ISO 3018

ca. 400 cm

**TUV NORD**  
 100 NORD Safety  
 33  
 Suitable for Allergic Persons  
 Wall to wall carpet of allergen-tested material  
 3.2-2384/05

**CE**  
 EN14041  
 21  
 Balta Industries - Kanegem-straat 15 - BE 8700 Tielt  
**DOP: 1011 #IEOACL**  
 Textile Floor Covering EN1307  
 Notified body 2401  
 REG. NR **99AC32B1**  
 www.pro-dis.info

**EN ISO 105-E01**  
 ≥ 4-5

**EN ISO 105-X12**  
 ≥ 4

**EN ISO 105-B02**  
 ≥ 7

**EN ISO 13501-1**  
 Cfl-s1

**EN ISO 3018**  
 ca. 400 cm

**EN 1307**  
 33 - LC2

**EN 985**  
 A: intensive use

**EN 1963**  
 A: intensive use

**ISO 6356**  
 < 2 kV

**ISO 140-8**  
 25 dB ΔLw

**ISO 354**  
 0.15 αw

**ISO 8302**  
 0.08 m<sup>2</sup> K/W



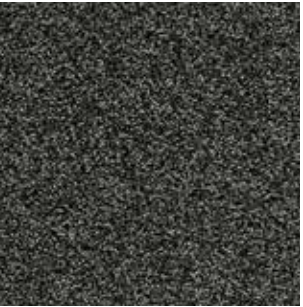
*e-force*

# 5/ *e-force*

A deep and inviting twist pile carpet in a two-tone effect, *e-force* brings classic style to commercial spaces. With a broad range of colours that resist stains and won't fade in sunlight, *e-force* is a high-performance quality that's perfect for setting a rich and inviting mood in heavy-wear locations. Bring long-lasting luxury with the endurance of *e-force*.



*e-force*



e-force 96

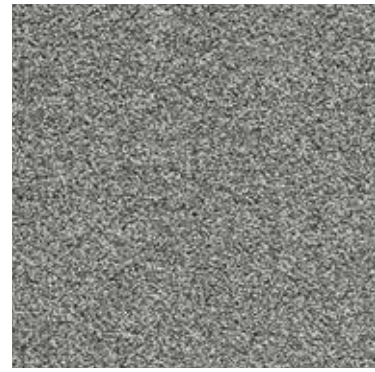
# e-force | COLOURS



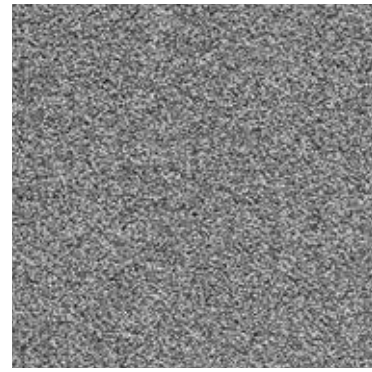
e-force 38



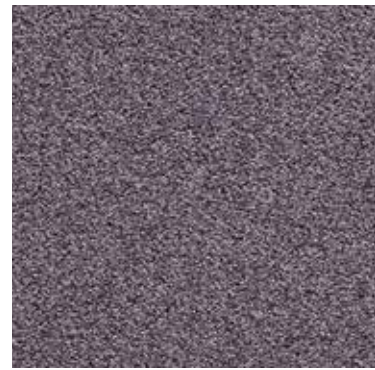
e-force 42



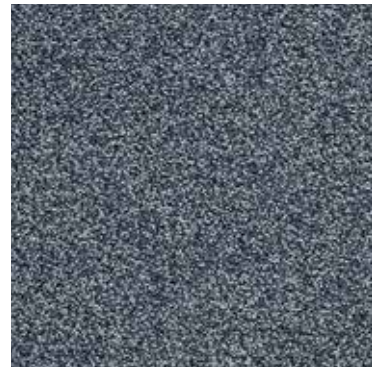
e-force 93



e-force 95



e-force 89



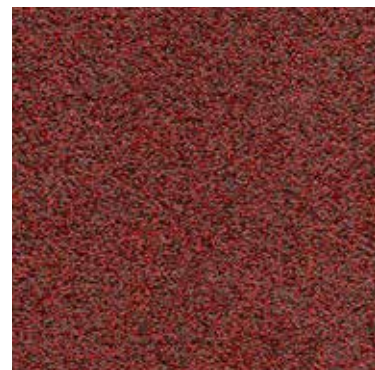
e-force 79



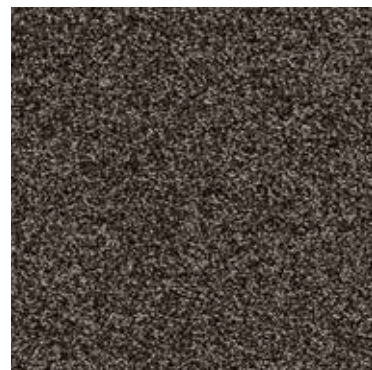
e-force 76



e-force 22



e-force 11



e-force 48



e-force 96



e-force 97

# e-force | TECHNICAL SPECIFICATIONS

## CONSTRUCTION

Tufting 1/10" twist pile

## PILE MATERIAL

100% PA solution dyed

## PRIMARY BACKING

Non woven PES

## SECONDARY BACKING

Action Back

## PILE WEIGHT

Ca. 1 270 gr/m<sup>2</sup>

## TOTAL WEIGHT

Ca. 2 200 gr/m<sup>2</sup>

## PILE HEIGHT

Ca. 6.7 mm

## TOTAL HEIGHT

Ca. 9 mm

## TUFT DENSITY

Ca. 182 000/m<sup>2</sup>

## PILE DENSITY

Ca. 0.163 g/cm<sup>3</sup>

## CLASSIFICATION

EN 1307

33 - LC5

## CASTOR CHAIR SUITABILITY

EN 985

A: intensive use

## STAIR SUITABILITY

EN 1963

A: intensive use

## PERMANENTLY ANTISTATIC

ISO 6356

< 2 kV

## IMPACT NOISE RATING

ISO 140-8

28 dB ΔLw

## SOUND ABSORPTION

ISO 354

0.20 aw

## THERMAL RESISTANCE

ISO 8302

0.11 m<sup>2</sup> K/W

## FASTNESS TO LIGHT

ISO 105-B02

≥ 7

## COLOUR FASTNESS TO WATER

EN ISO 105-E01

≥ 4-5

## RUBBING FASTNESS

EN ISO 105-X12

≥ 4

## FIRE RESISTANCE

EN 13501-1

Cfl-s1

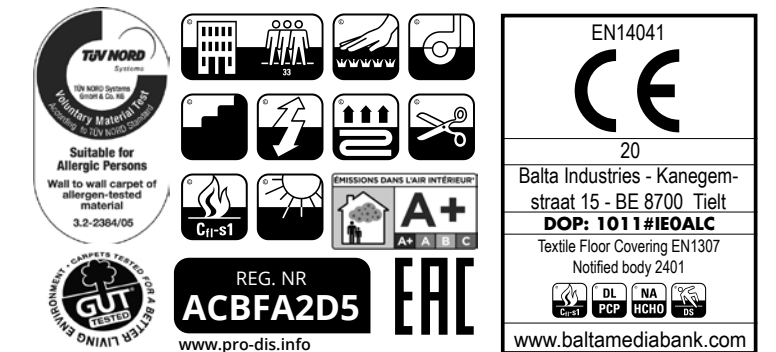
## NUMBER OF COLOURS

12

## WIDTH

EN ISO 3018

ca. 400 cm



# *e-major*

A photograph of a dense, lush green forest. The foreground is dominated by large, spreading tree roots and a thick carpet of vibrant green ferns. Several tall, slender tree trunks rise vertically into the background, surrounded by more foliage and ferns. The lighting is soft and natural, highlighting the textures of the forest floor and the trunks.

## 6/ *e-major*

A level-loop pile in a subtle grain effect, *e-major* brings a contemporary aesthetic that minimises the appearance of footprints. Remarkably resistant to sunlight and easy to clean, *e-major* is an ideal fit in high-traffic areas such as hotel lobbies or airport halls. Make a lasting impression with the majestic design of *e-major*.

# *e-major*



e-major 78



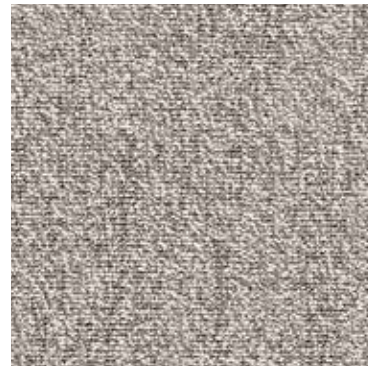
e-major 72



# e-major | COLOURS



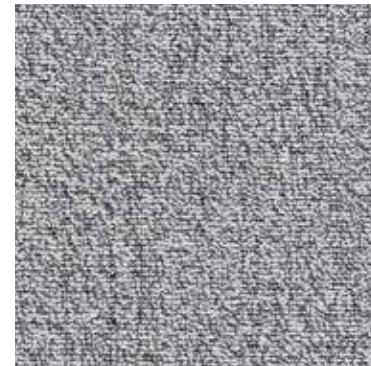
e-major 32



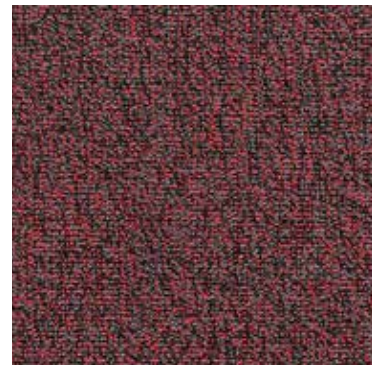
e-major 47



e-major 93



e-major 90



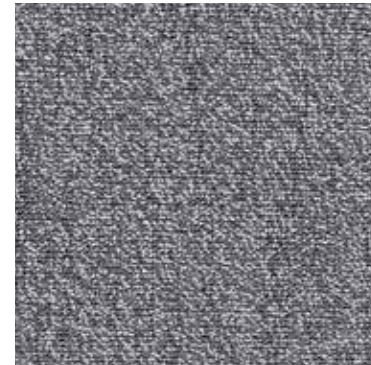
e-major 12



e-major 98



e-major 96



e-major 97



e-major 72



e-major 78

# e-major | TECHNICAL SPECIFICATIONS

## CONSTRUCTION

Tufting 1/10" textured loop

## PILE MATERIAL

100% PA solution dyed

## PRIMARY BACKING

Non woven PES

## SECONDARY BACKING

Action Back

## PILE WEIGHT

Ca. 640 gr/m<sup>2</sup>

## TOTAL WEIGHT

Ca. 2 050 gr/m<sup>2</sup>

## PILE HEIGHT

Ca. 2.8 mm

## TOTAL HEIGHT

Ca. 6 mm

## TUFT DENSITY

Ca. 140 000/m<sup>2</sup>

## PILE DENSITY

Ca. 0.125 g/cm<sup>3</sup>

## CLASSIFICATION

EN 1307

33 - LC1

## CASTOR CHAIR SUITABILITY

EN 985

A: intensive use

## STAIR SUITABILITY

EN 1963

A: intensive use

## PERMANENTLY ANTISTATIC

ISO 6356

< 2 kV

## IMPACT NOISE RATING

ISO 140-8

24 dB ΔLw

## SOUND ABSORPTION

ISO 354

0.15 αw

## THERMAL RESISTANCE

ISO 8302

0.07 m<sup>2</sup> K/W

## FASTNESS TO LIGHT

ISO 105-B02

≥ 7

## COLOUR FASTNESS TO WATER

EN ISO 105-E01

≥ 4-5

## RUBBING FASTNESS

EN ISO 105-X12

≥ 4

## FIRE RESISTANCE

EN 13501-1

Cfl-s1

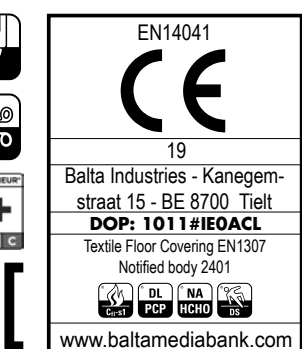
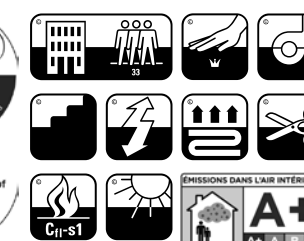
## NUMBER OF COLOURS

10

## WIDTH

EN ISO 3018

ca. 400 cm

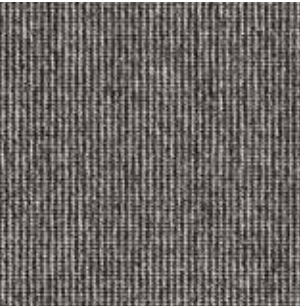


# *e-weave*



## ***e-weave***

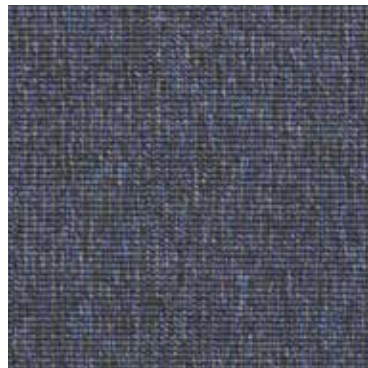
Nature meets modernity in *e-weave*, possessing the collection's finest weave. This two-tone design displays a subtle elegance that never goes out of style. With a striking minimalist look, *e-weave* delivers impressive wear-resistance and durability.



e-weave 96



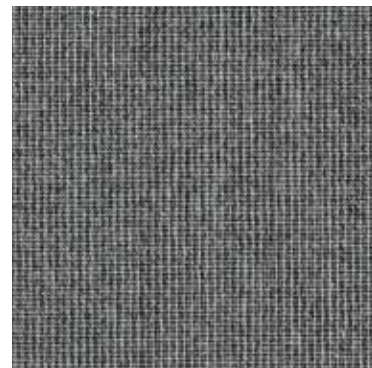
e-weave 73



e-weave 78



e-weave 79



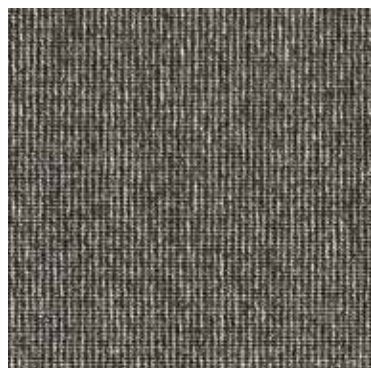
e-weave 90



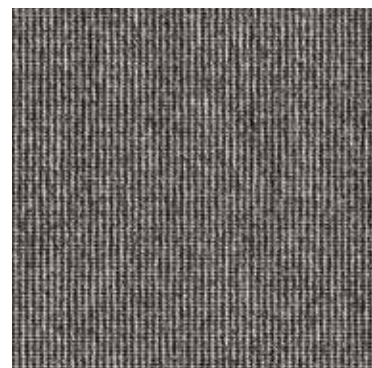
e-weave 94



e-weave 99



e-weave 98



e-weave 96



e-weave 49



e-weave 34



e-weave 93

**CONSTRUCTION**

Tufting 5/64" minituft

**PILE MATERIAL**

100% PA solution dyed

**PRIMARY BACKING**

Non woven PES

**SECONDARY BACKING**

Action Back

**PILE WEIGHT**

Ca. 500 gr/m<sup>2</sup>

**TOTAL WEIGHT**

Ca. 2 400 gr/m<sup>2</sup>

**PILE HEIGHT**

Ca. 1.1 mm

**TOTAL HEIGHT**

Ca. 5.1 mm

**TUFT DENSITY**

Ca. 200 000/m<sup>2</sup>

**PILE DENSITY**

Ca. 0.156 g/cm<sup>3</sup>

**CLASSIFICATION**

EN 1307

33 - LC1

**CASTOR CHAIR SUITABILITY**

EN 985

A: intensive use

**STAIR SUITABILITY**

EN 1963

A: intensive use

**PERMANENTLY ANTISTATIC**

ISO 6356

< 2 kV

**IMPACT NOISE RATING**

ISO 140-8

18 dB ΔLw

**SOUND ABSORPTION**

ISO 354

0.15 aw

**THERMAL RESISTANCE**

ISO 8302

0.05 m<sup>2</sup> K/W

**FASTNESS TO LIGHT**

ISO 105-B02

≥ 7

**COLOUR FASTNESS TO WATER**

EN ISO 105-E01

≥ 4-5

**RUBBING FASTNESS**

EN ISO 105-X12

≥ 4

**FIRE RESISTANCE**

N 13501-1

Cfl-s1 (if glued)

**NUMBER OF COLOURS**

11

**WIDTH**

EN ISO 3018

ca. 400 cm

**TUV NORD**  
 100% PA solution dyed  
 Suitable for Allergic Persons  
 Wall to wall carpet of allergen-tested material  
 3.2-2384/05

**CE**  
 EN14041  
 19  
 Balta Industries - Kanegem-straat 15 - BE 8700 Tielt  
**DOP: 1011#IEOACL**  
 Textile Floor Covering EN1307  
 Notified body 2401

**REG. NR 7E146FDC**  
 www.pro-dis.info

**EAC**  
 www.baltamediabank.com

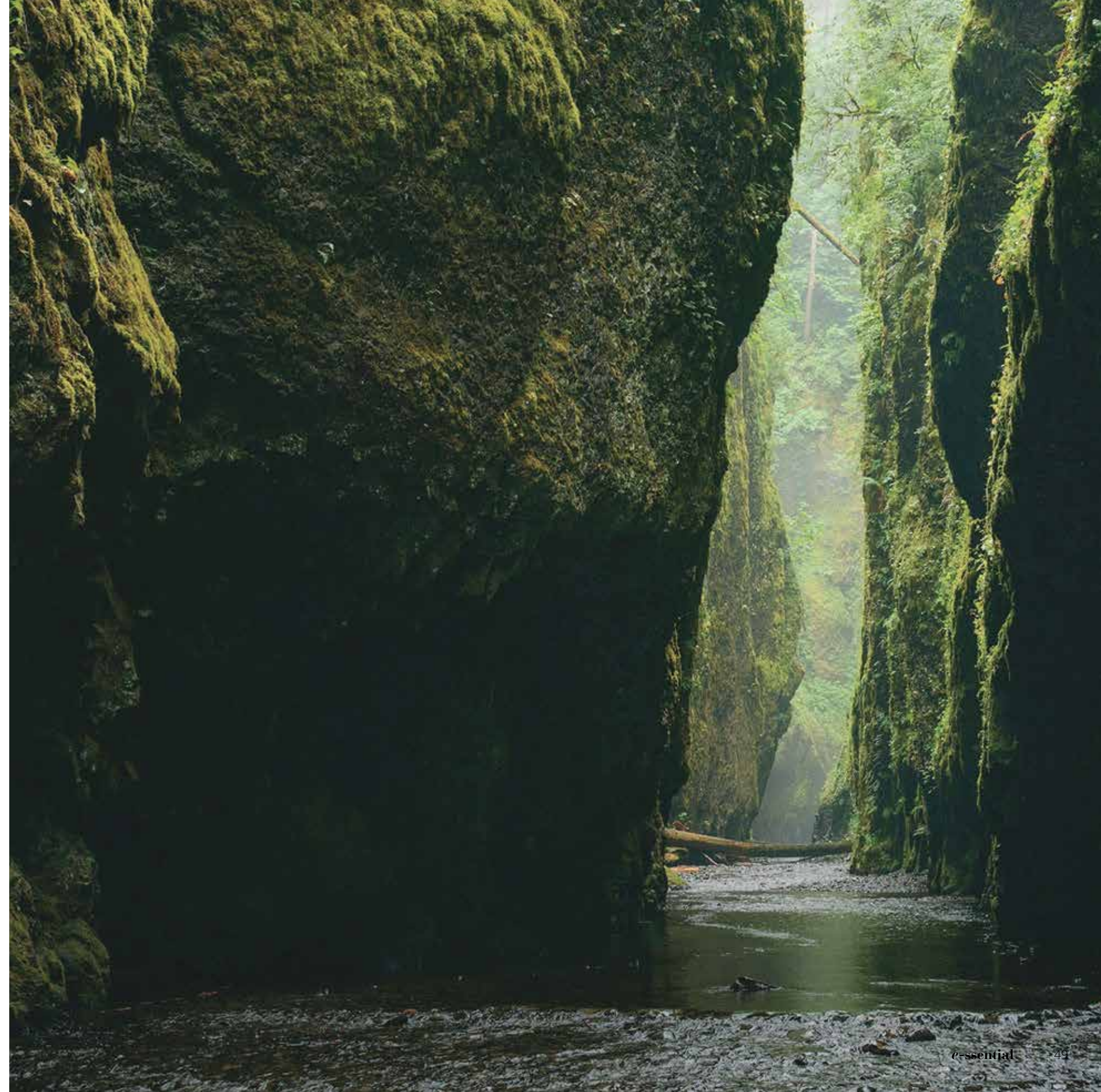




Is e-ssential your natural choice?  
Let's talk!

[INFO@ARCEDITION.COM](mailto:INFO@ARCEDITION.COM)

Balta Industries nv  
Kanegemstraat 15 - B-8700 Tielt - Belgium - T +32 (0)51 42 44 11  
[info@arcedition.com](mailto:info@arcedition.com) - [www.arcedition.com](http://www.arcedition.com)



[www.arcedition.com](http://www.arcedition.com)

 arc edition®